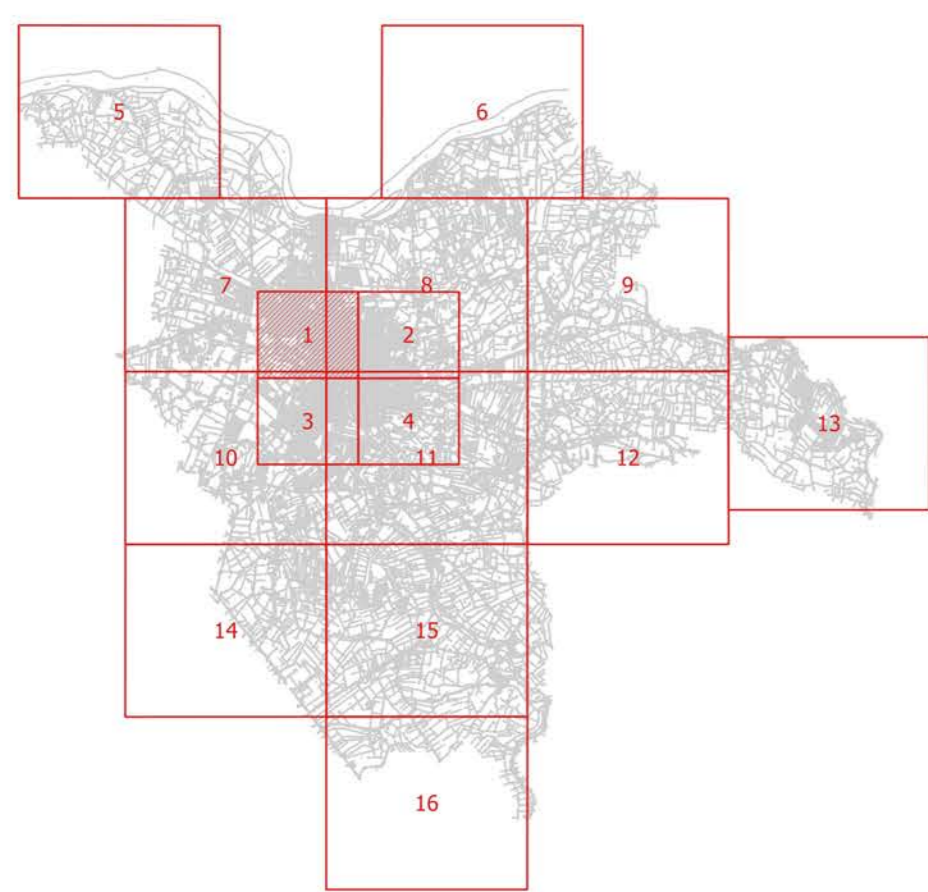









PRIC FERRARA
PIANO REGOLATORE ILLUMINAZIONE COMUNALE

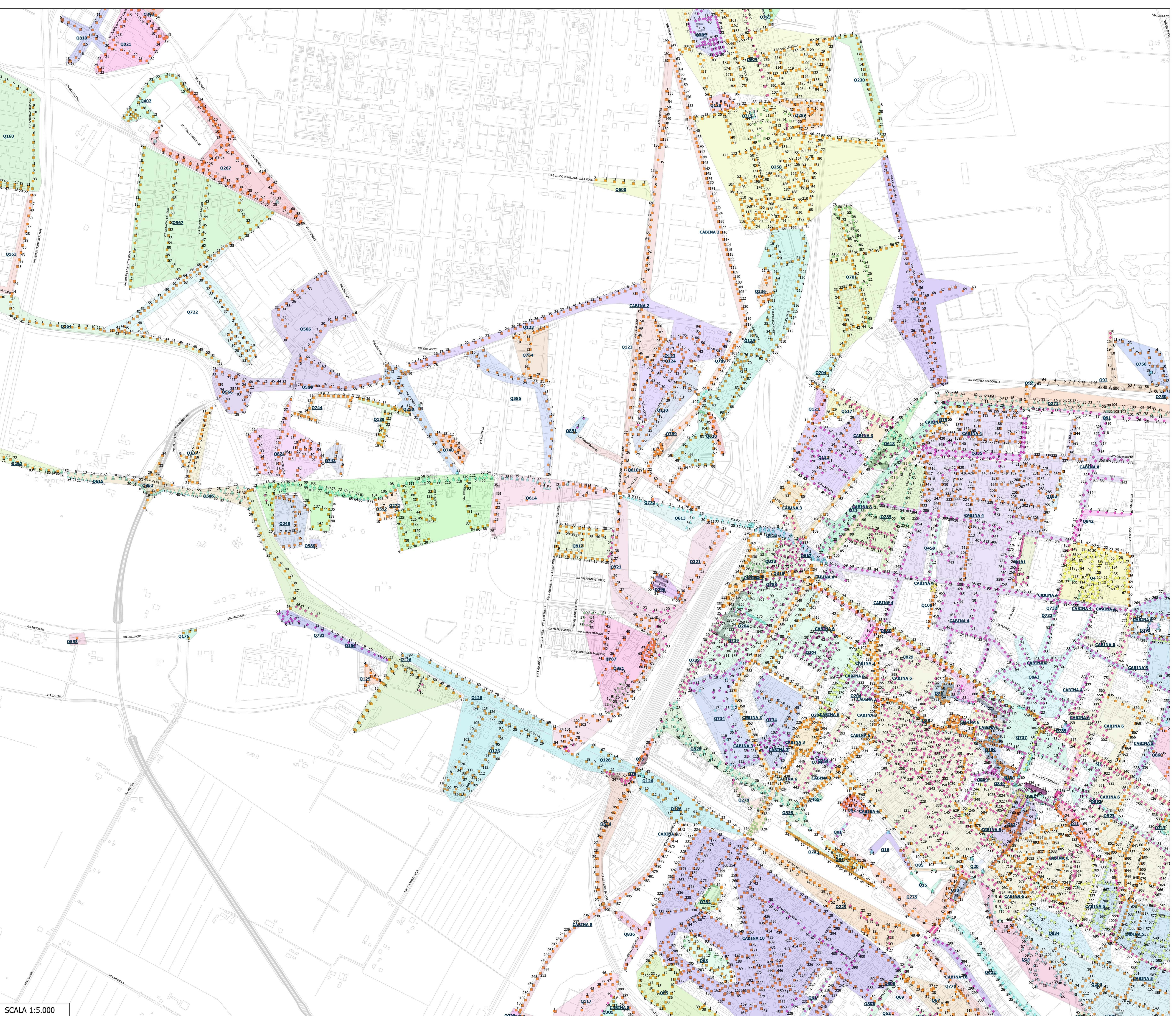


N. Elab.	Descrizione elaborato:	Il Dirigente di Servizio:
C. 1.1	SCHEMA PLANIMETRICO TIPOLOGIA APPARECCHI ILLUMINANTI - AREA N. 1 SCALA 1:5.000	Ing. Enrico Pocaterra
N. Rev.	Descrizione revisione:	Data:
		Approvato il: 13/03/2017 Delibera consiliare PG: 22530/17

PIANTA GUIDA DEL TERRITORIO



- Legenda**
- PUNTI LUCE**
-  Armatura Stradale
 -  Arredo Urbano
 -  Lanterna Artistica
 -  Piaforiera
 -  Proiettore
 -  Sfera o similare
 -  Segnapasso
- QXXX** Poligono identificativo quadro elettrico di appartenenza



SCALA 1:5.000