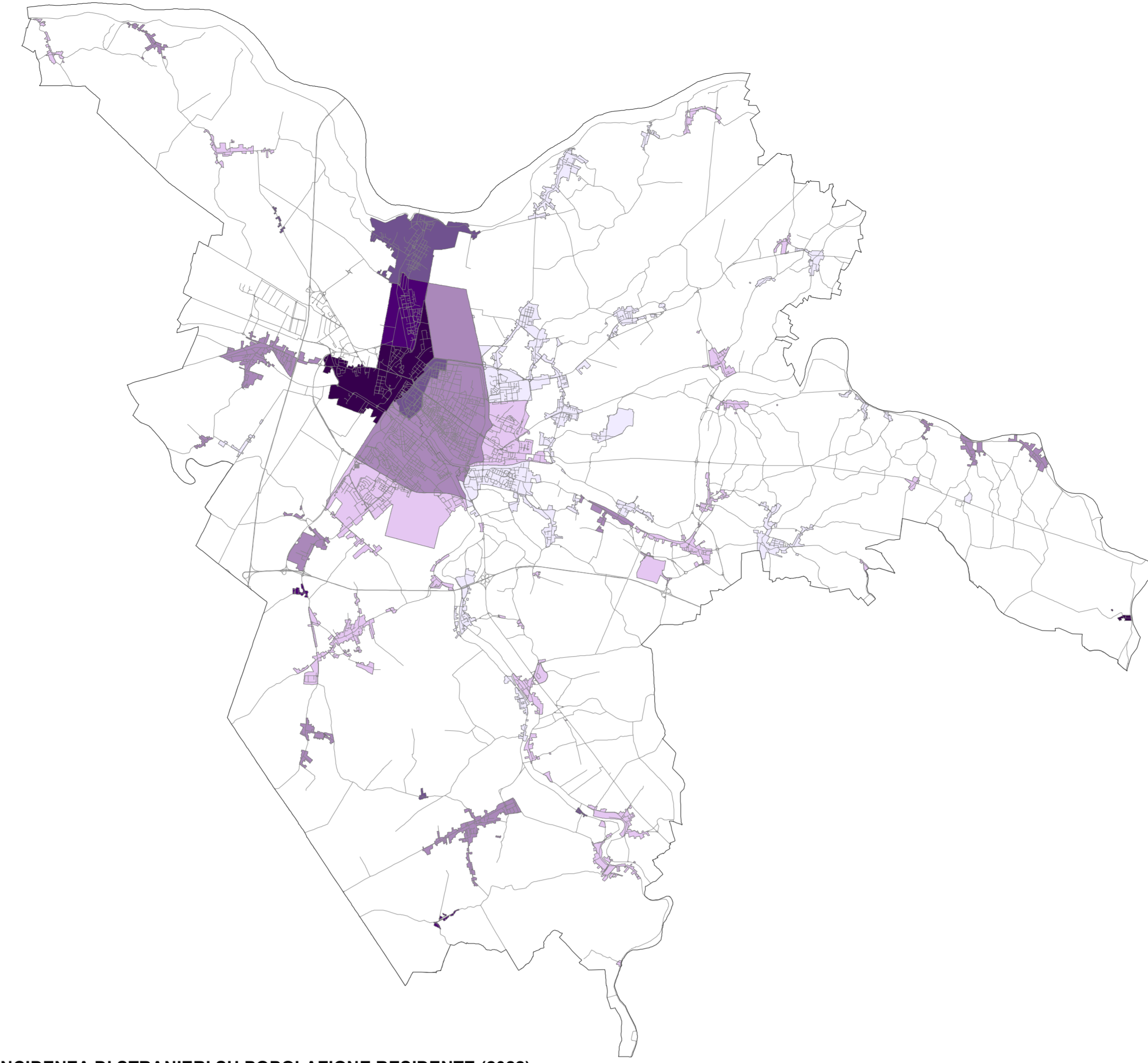
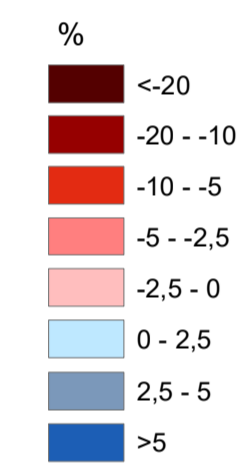
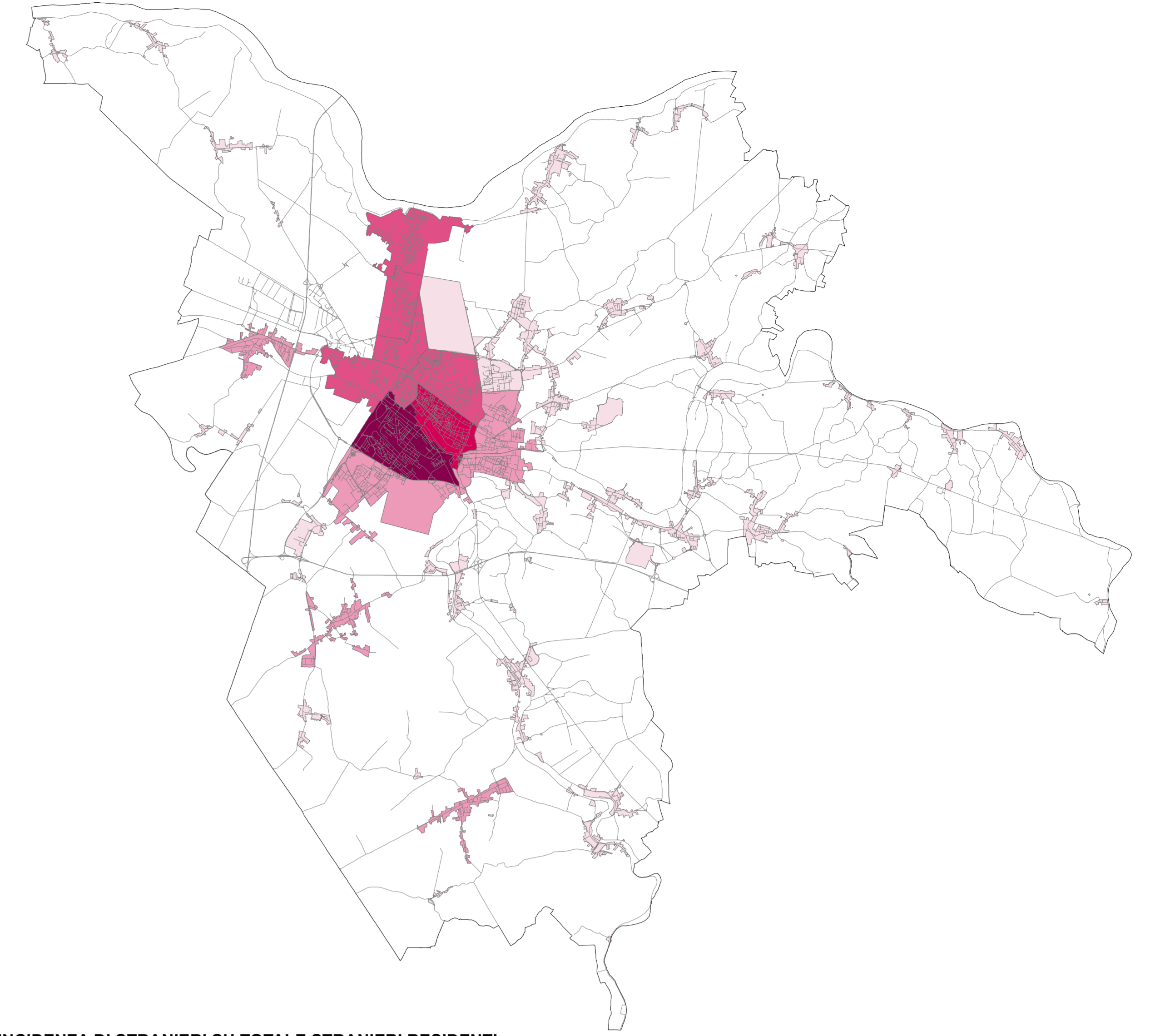
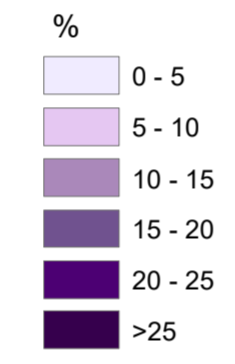


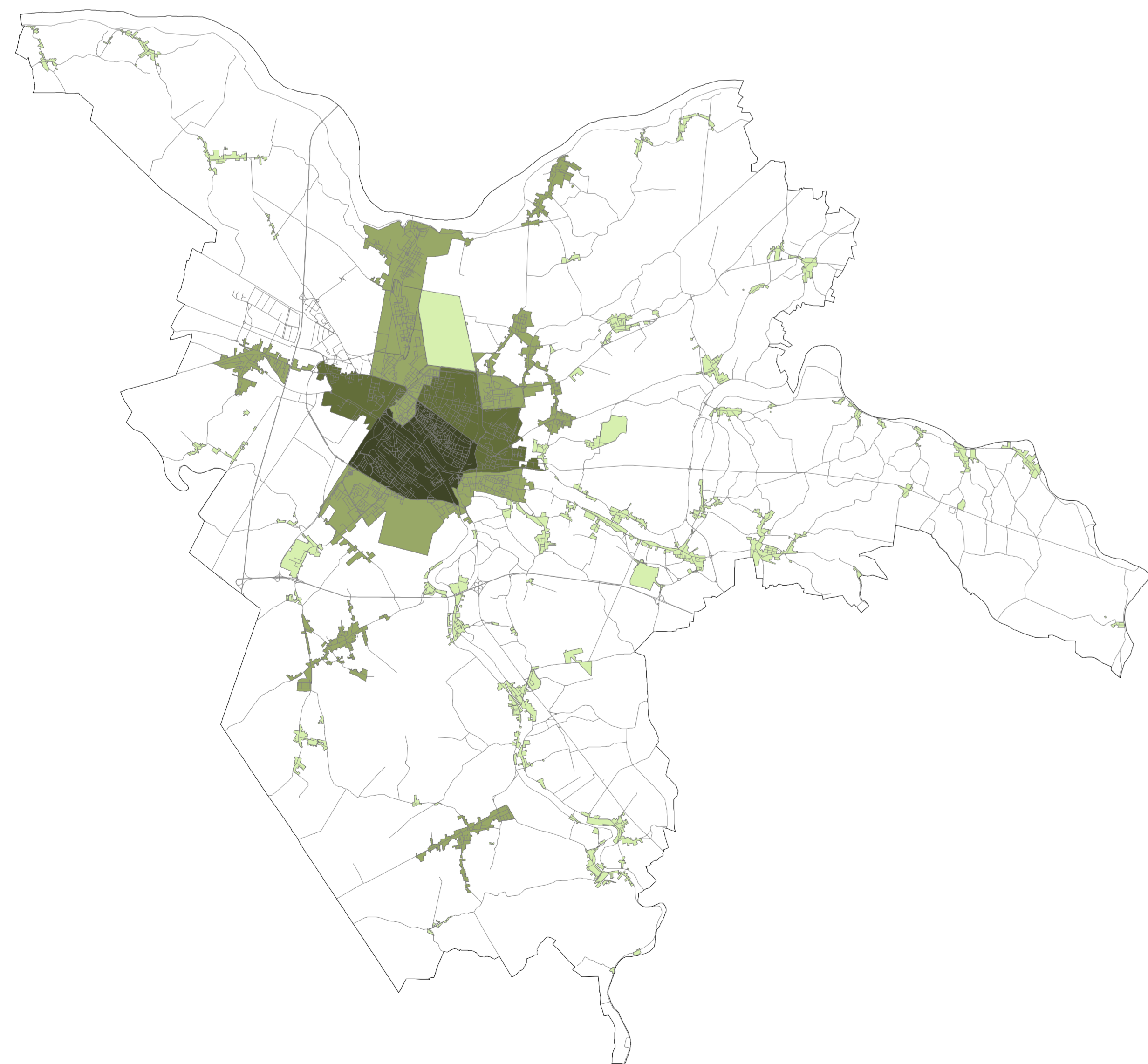
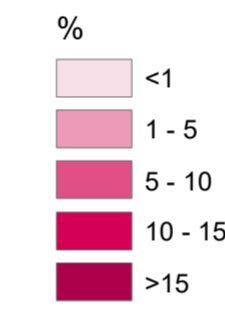
VARIAZIONE PERCENTUALE DI POPOLAZIONE (2010-2020)



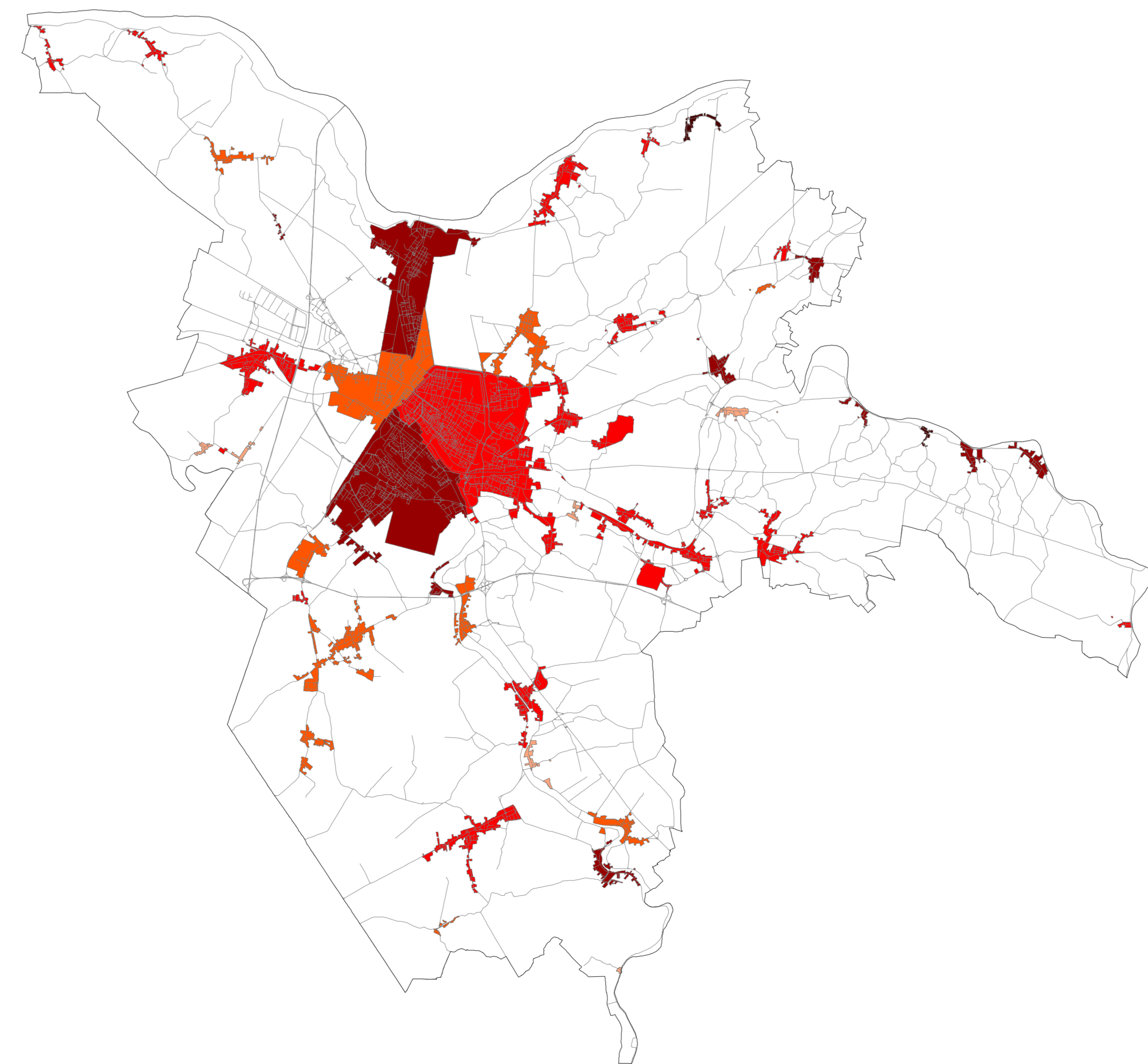
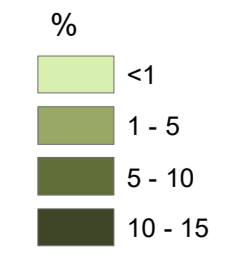
INCIDENZA DI STRANIERI SU POPOLAZIONE RESIDENTE (2022)



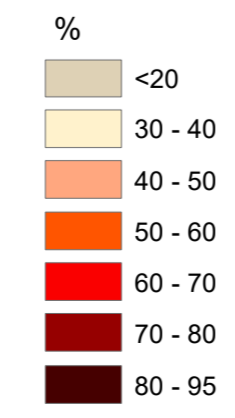
INCIDENZA DI STRANIERI SU TOTALE STRANIERI RESIDENTI A FERRARA (2022)



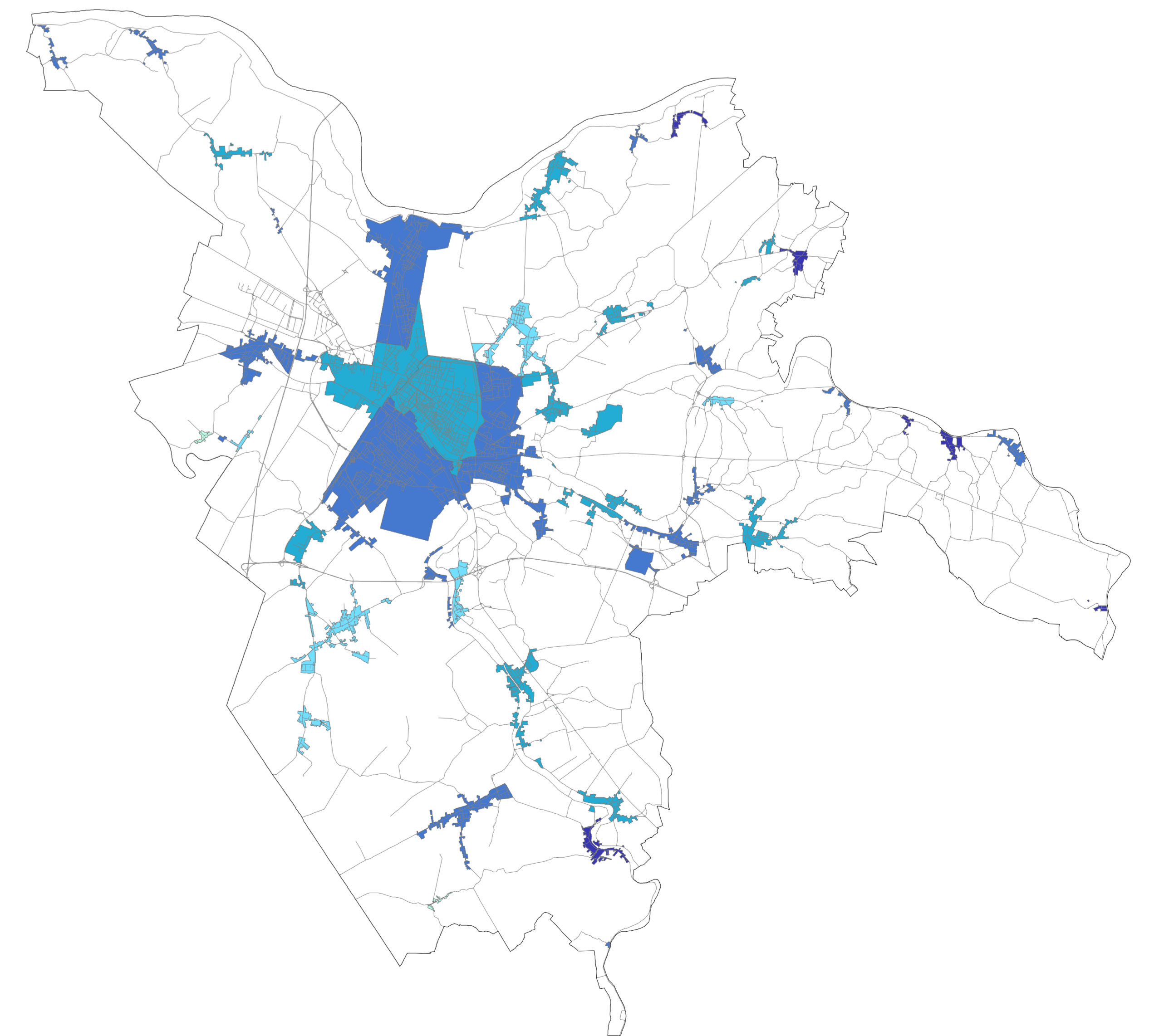
INCIDENZA POPOLAZIONE IN ETA' DA FAMIGLIA (19-45 ANNI) SULLA POPOLAZIONE RESIDENTE A FERRARA (2022)



INDICE DI DIPENDENZA* (2020)



* rapporto percentuale tra popolazione in eta' non attiva (0-14 anni e oltre 64 anni) e popolazione attiva (15-64 anni)



INCIDENZA DELLA POPOLAZIONE ANZIANA (>65 ANNI) SULLA POPOLAZIONE RESIDENTE (2020)

