



COMUNE DI FERRARA

Piazza del Municipio, 2
44121 (FE)

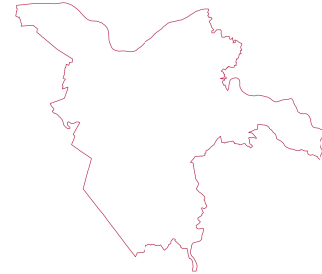
PIANO COMUNALE PER LA LOCALIZZAZIONE DEGLI IMPIANTI FISSI DI TELEFONIA MOBILE

Ai sensi della Legge 36/2001



SINPRO srl
Via dell'Artigianato,20
- 30030 Vigonovo (VE)
info@sinprosf.com
Tel. 049/9801745

UNI EN ISO 14001:2015
UNI EN ISO 9001:2015
UNI CEI 11352:2014
UNI ISO 45001:2018



*Progettista e progettista incaricato dell'integrazione
delle prestazioni specialistiche:*

Ing. Massimo Brait
Ordine degli Ingegneri di Venezia n.3383
EGE_0066 del 16/05/2016 Certificato con Kiwa Cermet

Dott. Urb. Teresa Lania
Ordine degli Architetti di Padova - Sez. A Pianificatore
Territoriale n.3535



4 n

SIMULAZIONE ISOLINEE DI CAMPO ELETTROMAGNETICO

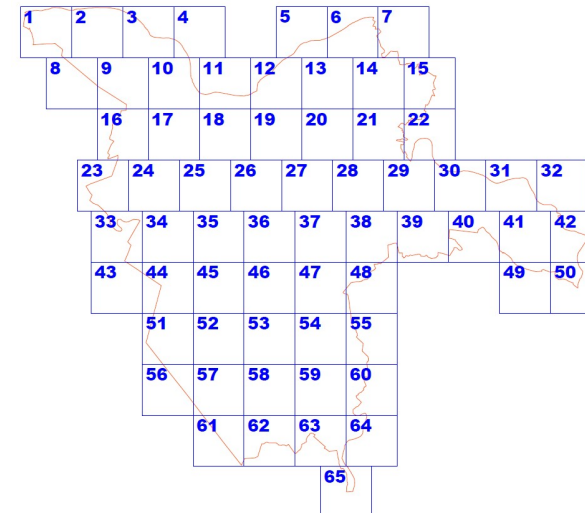
Sindaco	Alan Fabbri	Data di progetto:	Dicembre 2021
RUP	Fabrizio Magnani	Rev. 01	
Segretario	Omella Cavallari		
Nome file:	Simulazione isolinee CEM	Controllato da:	T. Lania
Redatto da	M. Fasolo	Approvato da:	M. Brait

A termini di legge ci riserviamo la proprietà di questo documento con divieto di riprodurlo o di renderlo noto a terzi senza la nostra autorizzazione

ANALISI AGGIORNATA DELLO STATO DI PROGETTO CON INTEGRAZIONE DI NUOVI E POTENZIALI IMPIANTI

3D

SUDDIVISIONE DEL TERRITORIO IN QUADRANTI









A partire dalle caratteristiche radioelettriche dei vari impianti, mediante il software di simulazione EMLAB 2.9.1.1., si è calcolato il contributo al valore efficace di campo elettrico dovuto alla attivazione della stazione radio base, considerando i dati a massima espansione.

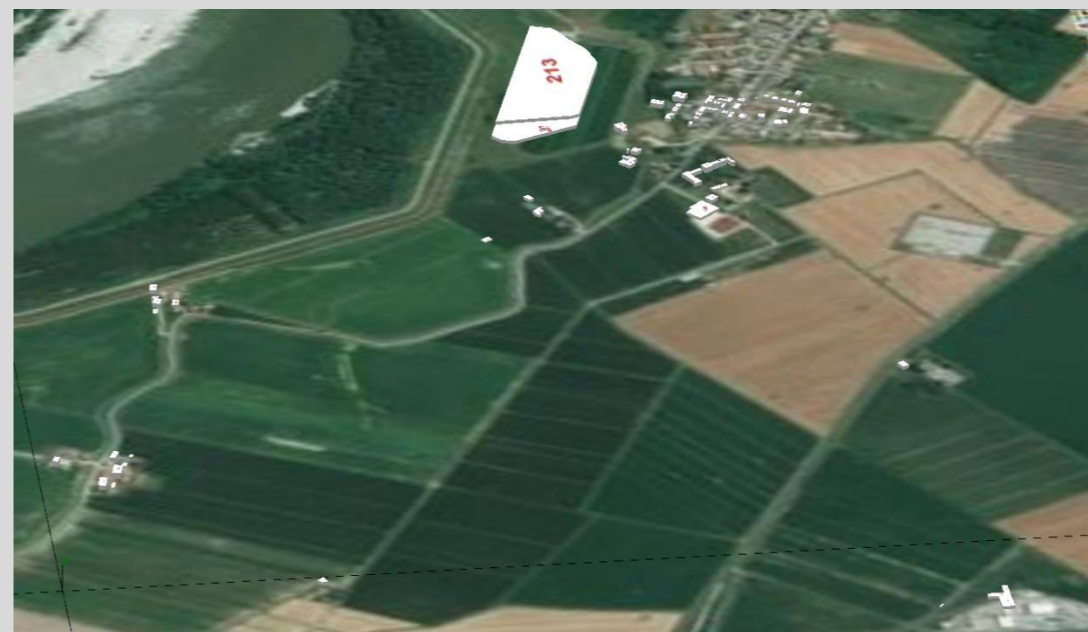
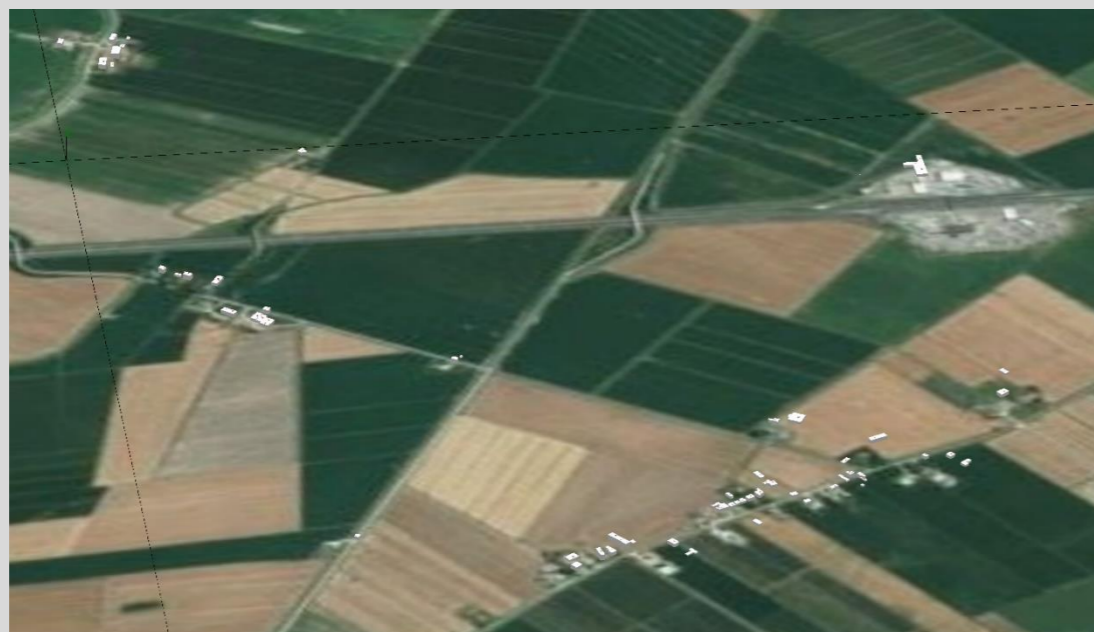
QUADRANTE n. 5



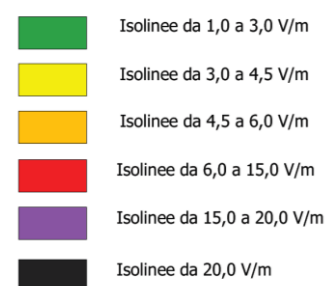
Campo Elettromagnetico

-  Isolinee da 1,0 a 3,0 V/m
-  Isolinee da 3,0 a 4,5 V/m
-  Isolinee da 4,5 a 6,0 V/m
-  Isolinee da 6,0 a 15,0 V/m
-  Isolinee da 15,0 a 20,0 V/m
-  Isolinee da 20,0 V/m

QUADRANTE n. 10a



Campo Elettromagnetico



QUADRANTE n. 10b



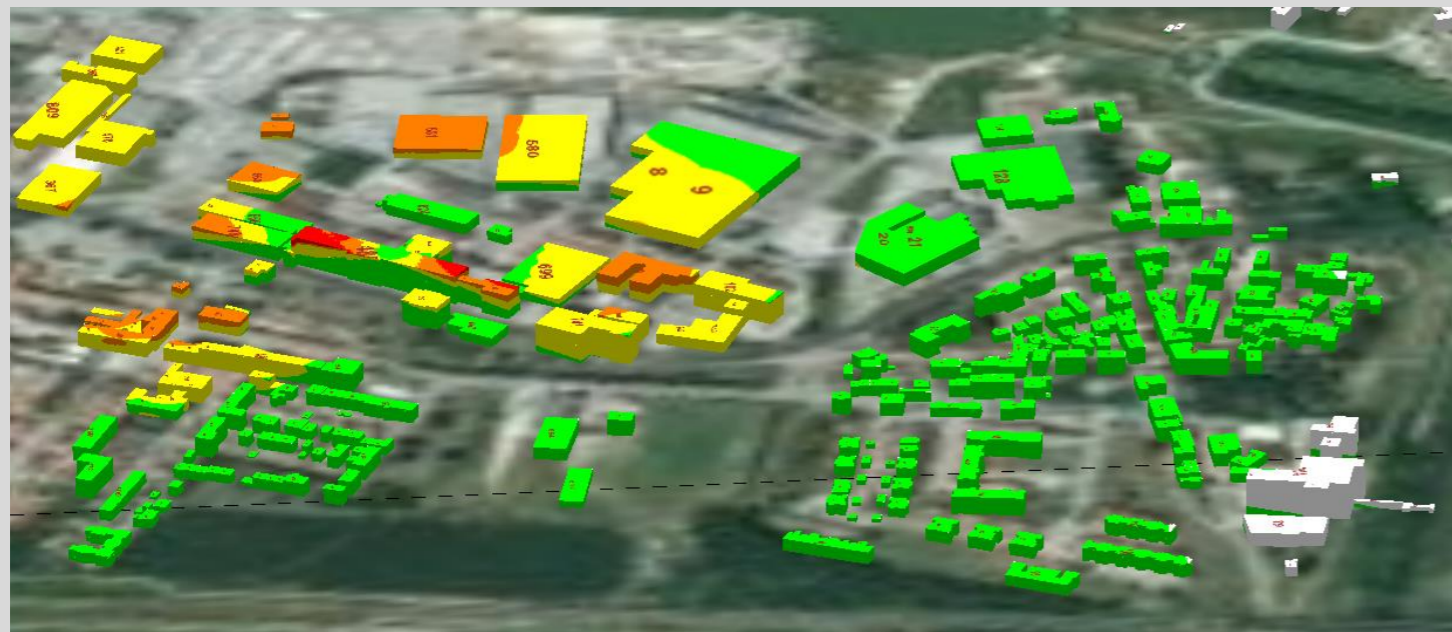
QUADRANTE n. 11a



Campo Elettromagnetico

- Isolinee da 1,0 a 3,0 V/m
- Isolinee da 3,0 a 4,5 V/m
- Isolinee da 4,5 a 6,0 V/m
- Isolinee da 6,0 a 15,0 V/m
- Isolinee da 15,0 a 20,0 V/m
- Isolinee da 20,0 V/m







QUADRANTE n. 11b



QUADRANTE n. 12a









Campo Elettromagnetico

-  Isolinee da 1,0 a 3,0 V/m
-  Isolinee da 3,0 a 4,5 V/m
-  Isolinee da 4,5 a 6,0 V/m
-  Isolinee da 6,0 a 15,0 V/m
-  Isolinee da 15,0 a 20,0 V/m
-  Isolinee da 20,0 V/m

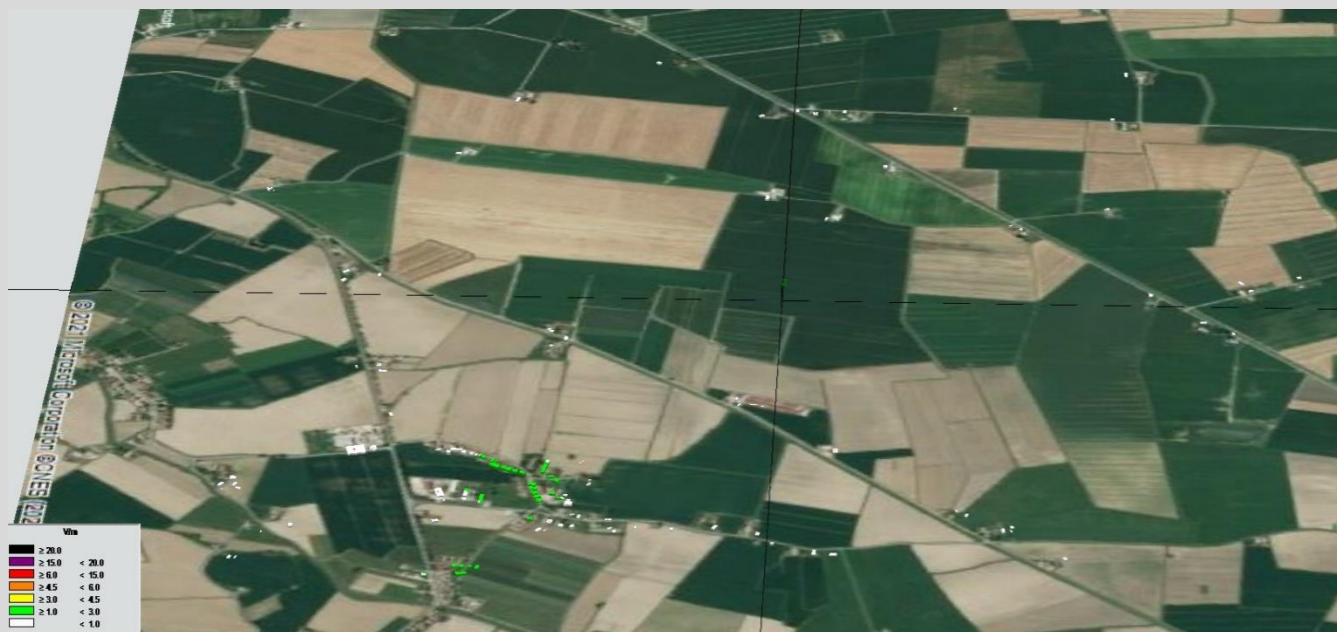
QUADRANTE n. 12b



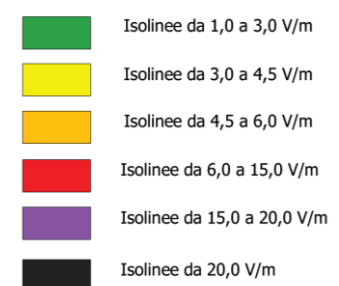
Campo Elettromagnetico

-  Isolinee da 1,0 a 3,0 V/m
-  Isolinee da 3,0 a 4,5 V/m
-  Isolinee da 4,5 a 6,0 V/m
-  Isolinee da 6,0 a 15,0 V/m
-  Isolinee da 15,0 a 20,0 V/m
-  Isolinee da 20,0 V/m

QUADRANTE n. 14a



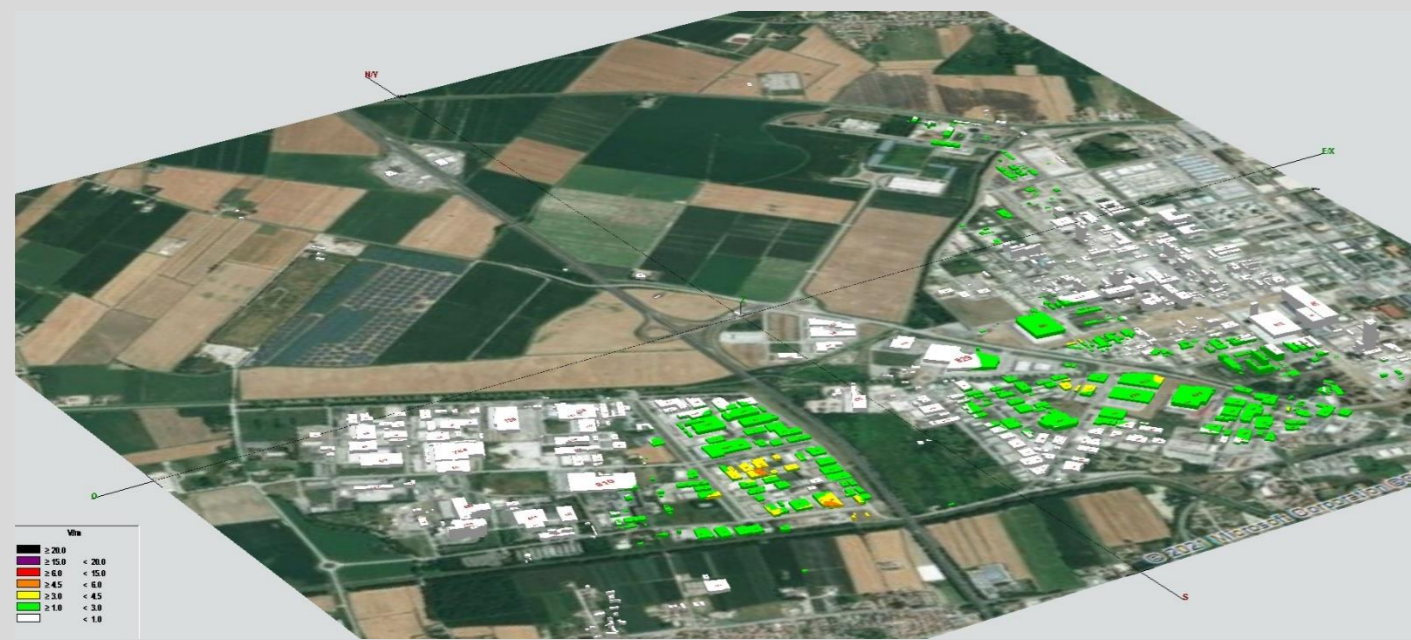
Campo Elettromagnetico



QUADRANTE n. 14b



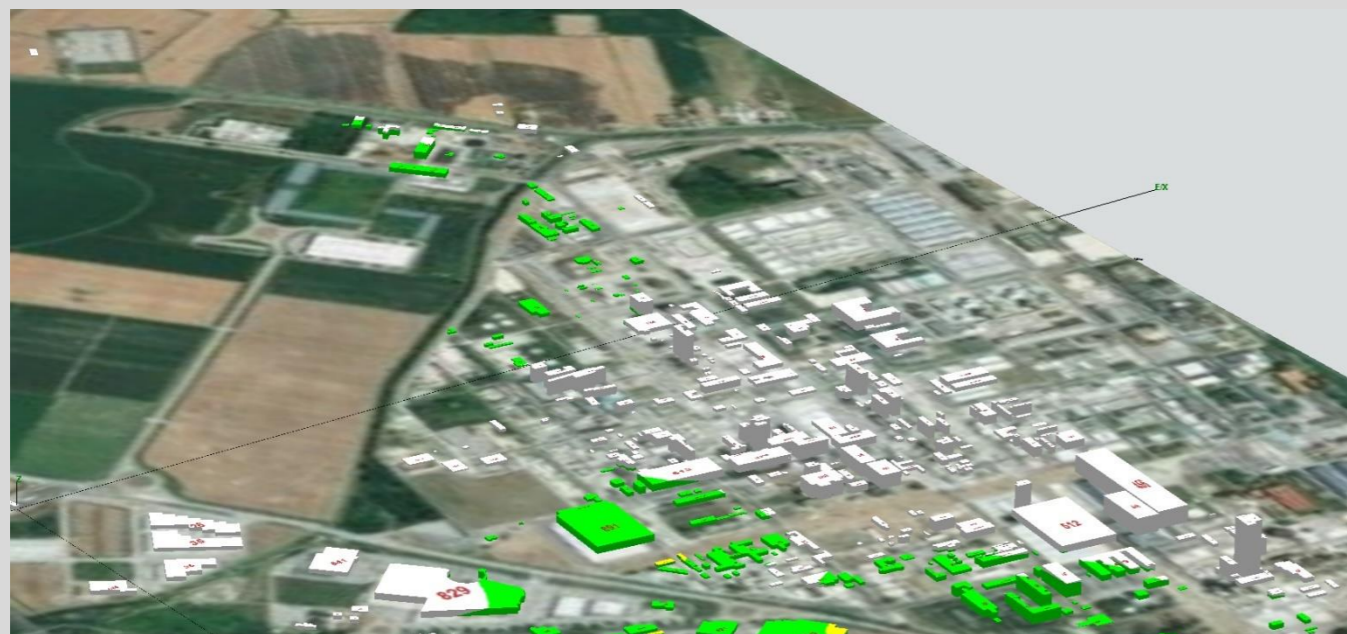
QUADRANTE n. 17a









Campo Elettromagnetico

- Isolinee da 1,0 a 3,0 V/m
- Isolinee da 3,0 a 4,5 V/m
- Isolinee da 4,5 a 6,0 V/m
- Isolinee da 6,0 a 15,0 V/m
- Isolinee da 15,0 a 20,0 V/m
- Isolinee da 20,0 V/m

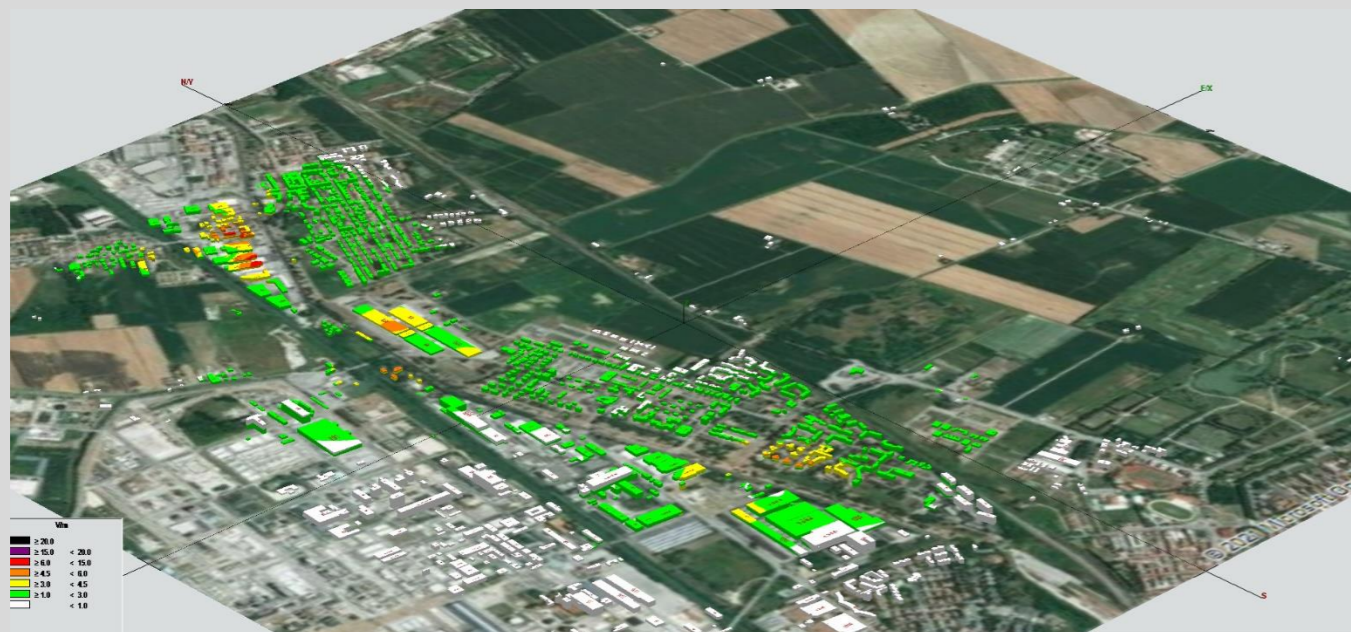
QUADRANTE n. 17b



Campo Elettromagnetico

-  Isolinee da 1,0 a 3,0 V/m
-  Isolinee da 3,0 a 4,5 V/m
-  Isolinee da 4,5 a 6,0 V/m
-  Isolinee da 6,0 a 15,0 V/m
-  Isolinee da 15,0 a 20,0 V/m
-  Isolinee da 20,0 V/m

QUADRANTE n. 18a



Campo Elettromagnetico

- Isolinee da 1,0 a 3,0 V/m
- Isolinee da 3,0 a 4,5 V/m
- Isolinee da 4,5 a 6,0 V/m
- Isolinee da 6,0 a 15,0 V/m
- Isolinee da 15,0 a 20,0 V/m
- Isolinee da 20,0 V/m

QUADRANTE n. 18b



QUADRANTE n. 19a



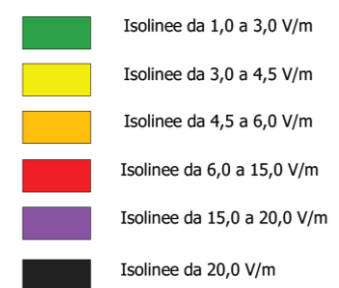
Campo Elettromagnetico

- Isolinee da 1,0 a 3,0 V/m
- Isolinee da 3,0 a 4,5 V/m
- Isolinee da 4,5 a 6,0 V/m
- Isolinee da 6,0 a 15,0 V/m
- Isolinee da 15,0 a 20,0 V/m
- Isolinee da 20,0 V/m

QUADRANTE n. 19b



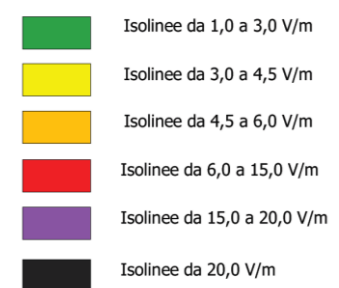
Campo Elettromagnetico



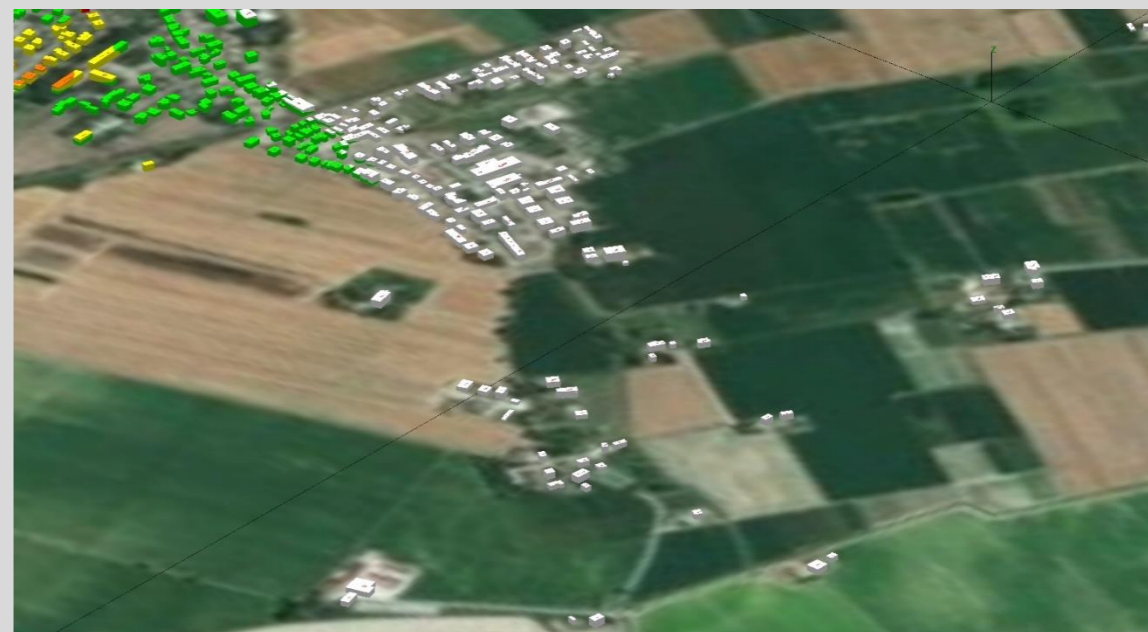
QUADRANTE n. 24a









Campo Elettromagnetico



QUADRANTE n. 24b









Campo Elettromagnetico

-  Isolinee da 1,0 a 3,0 V/m
-  Isolinee da 3,0 a 4,5 V/m
-  Isolinee da 4,5 a 6,0 V/m
-  Isolinee da 6,0 a 15,0 V/m
-  Isolinee da 15,0 a 20,0 V/m
-  Isolinee da 20,0 V/m

QUADRANTE n. 25a









Campo Elettromagnetico

-  Isolinee da 1,0 a 3,0 V/m
-  Isolinee da 3,0 a 4,5 V/m
-  Isolinee da 4,5 a 6,0 V/m
-  Isolinee da 6,0 a 15,0 V/m
-  Isolinee da 15,0 a 20,0 V/m
-  Isolinee da 20,0 V/m

QUADRANTE n. 25b



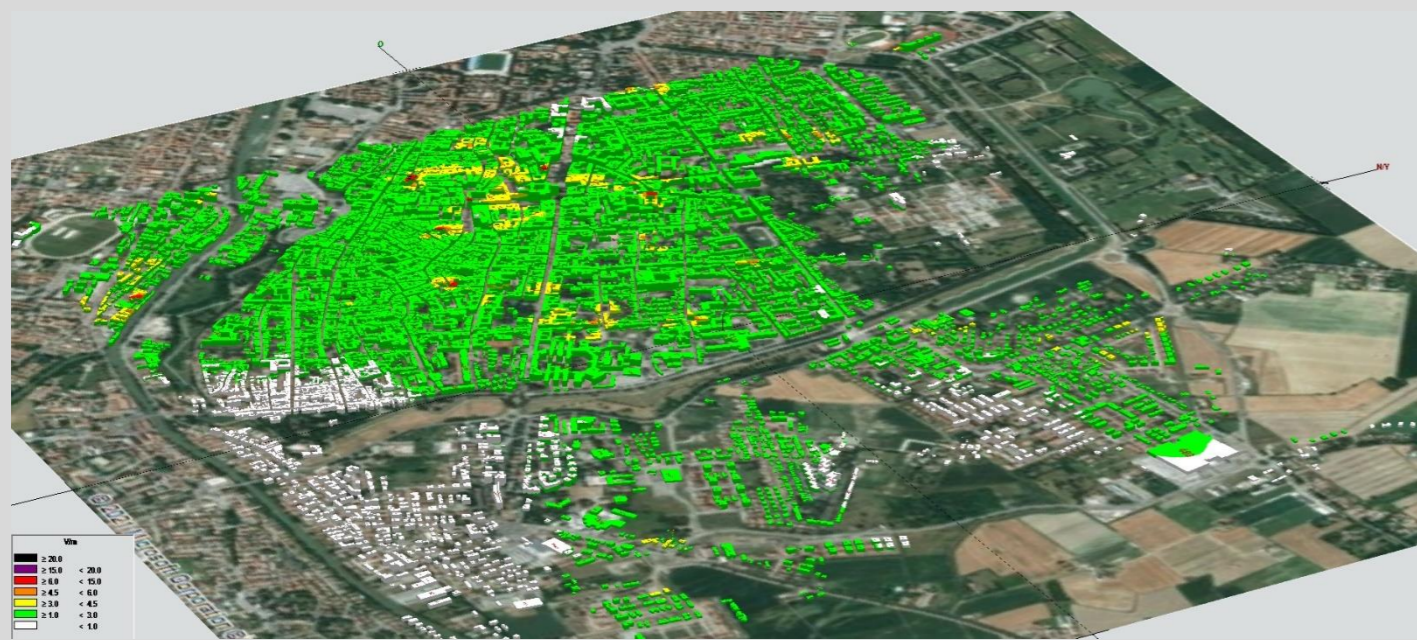
Campo Elettromagnetico

-  Isolinee da 1,0 a 3,0 V/m
-  Isolinee da 3,0 a 4,5 V/m
-  Isolinee da 4,5 a 6,0 V/m
-  Isolinee da 6,0 a 15,0 V/m
-  Isolinee da 15,0 a 20,0 V/m
-  Isolinee da 20,0 V/m







QUADRANTE n. 25c



QUADRANTE n. 26a









Campo Elettromagnetico

-  Isolinee da 1,0 a 3,0 V/m
-  Isolinee da 3,0 a 4,5 V/m
-  Isolinee da 4,5 a 6,0 V/m
-  Isolinee da 6,0 a 15,0 V/m
-  Isolinee da 15,0 a 20,0 V/m
-  Isolinee da 20,0 V/m

QUADRANTE n. 26b









Campo Elettromagnetico

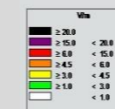
-  Isolinee da 1,0 a 3,0 V/m
-  Isolinee da 3,0 a 4,5 V/m
-  Isolinee da 4,5 a 6,0 V/m
-  Isolinee da 6,0 a 15,0 V/m
-  Isolinee da 15,0 a 20,0 V/m
-  Isolinee da 20,0 V/m

QUADRANTE n. 26c



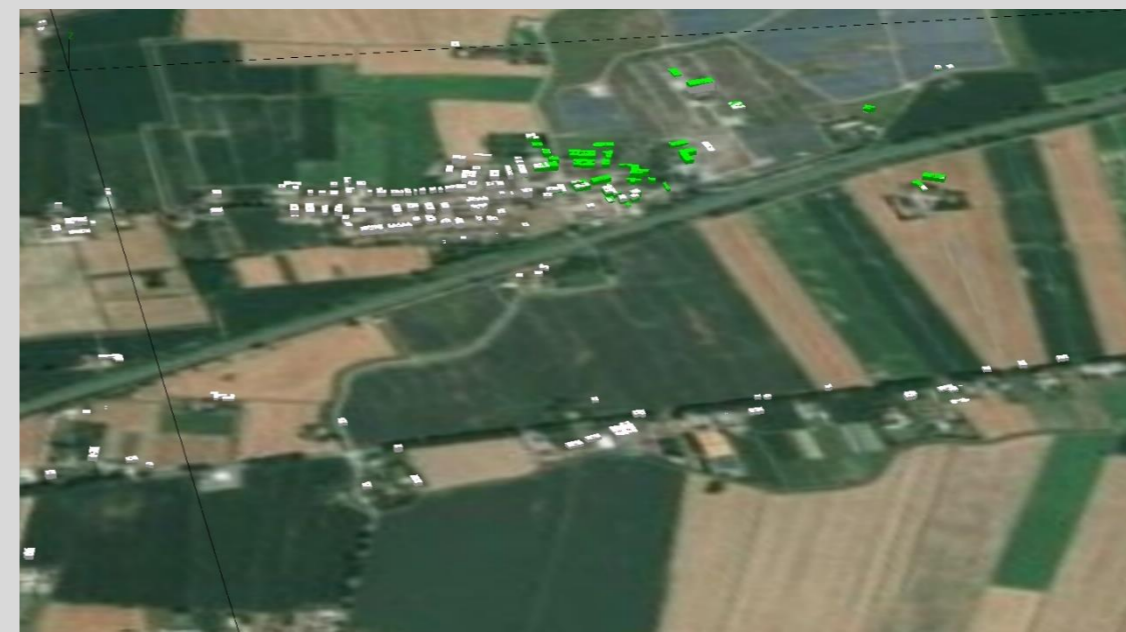
Campo Elettromagnetico

-  Isolinee da 1,0 a 3,0 V/m
-  Isolinee da 3,0 a 4,5 V/m
-  Isolinee da 4,5 a 6,0 V/m
-  Isolinee da 6,0 a 15,0 V/m
-  Isolinee da 15,0 a 20,0 V/m
-  Isolinee da 20,0 V/m

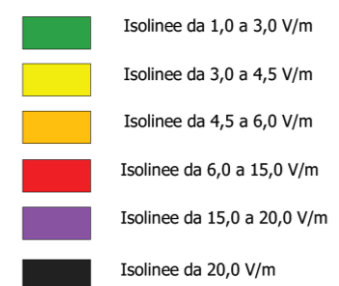


0.50 km

QUADRANTE n. 27a



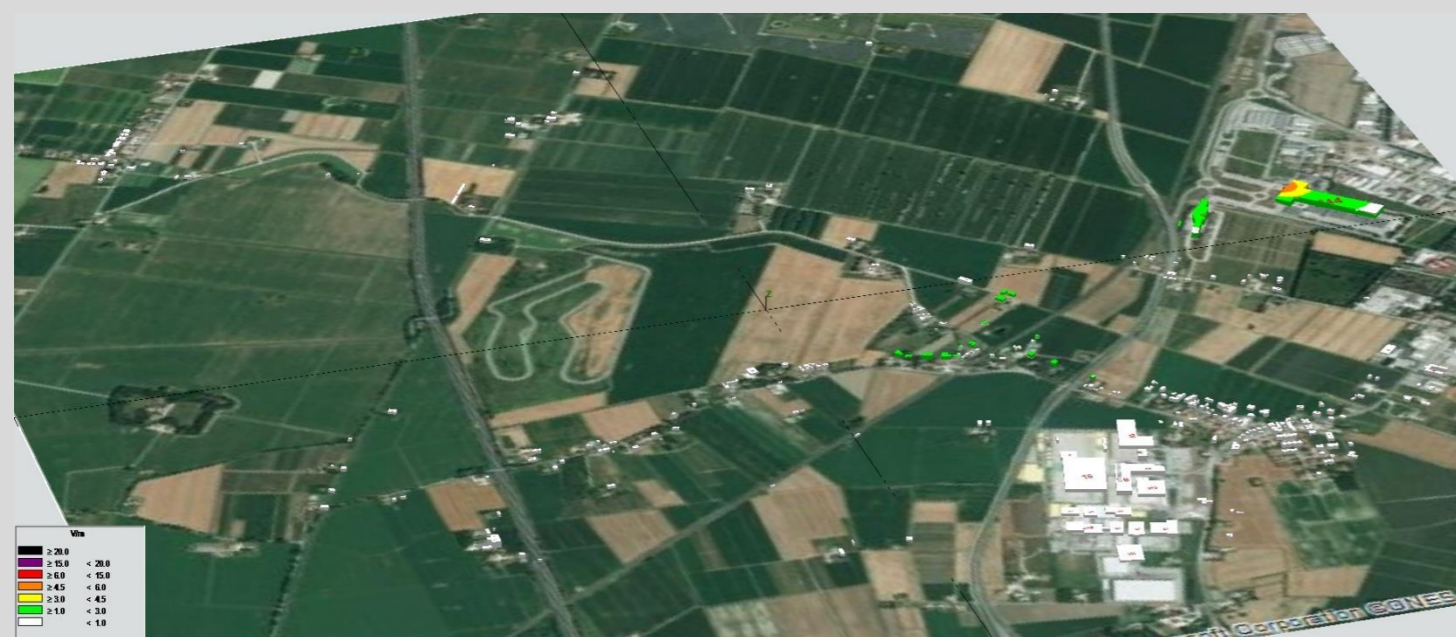
Campo Elettromagnetico









QUADRANTE n. 27b



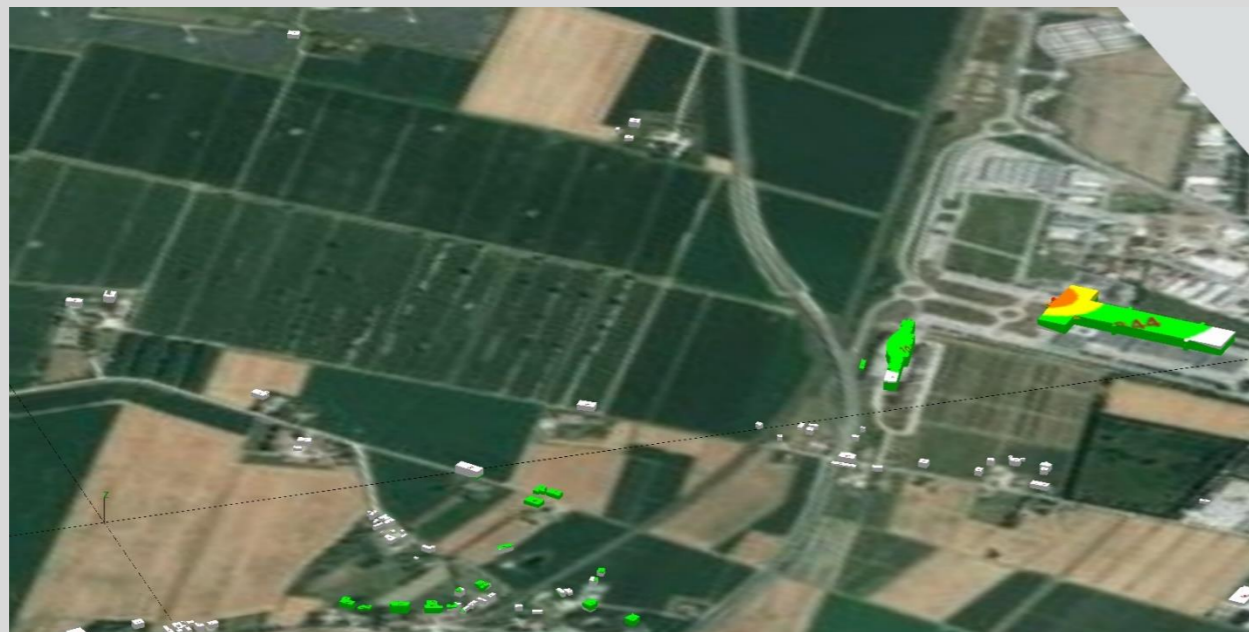
QUADRANTE n. 34a









Campo Elettromagnetico

-  Isolinee da 1,0 a 3,0 V/m
-  Isolinee da 3,0 a 4,5 V/m
-  Isolinee da 4,5 a 6,0 V/m
-  Isolinee da 6,0 a 15,0 V/m
-  Isolinee da 15,0 a 20,0 V/m
-  Isolinee da 20,0 V/m

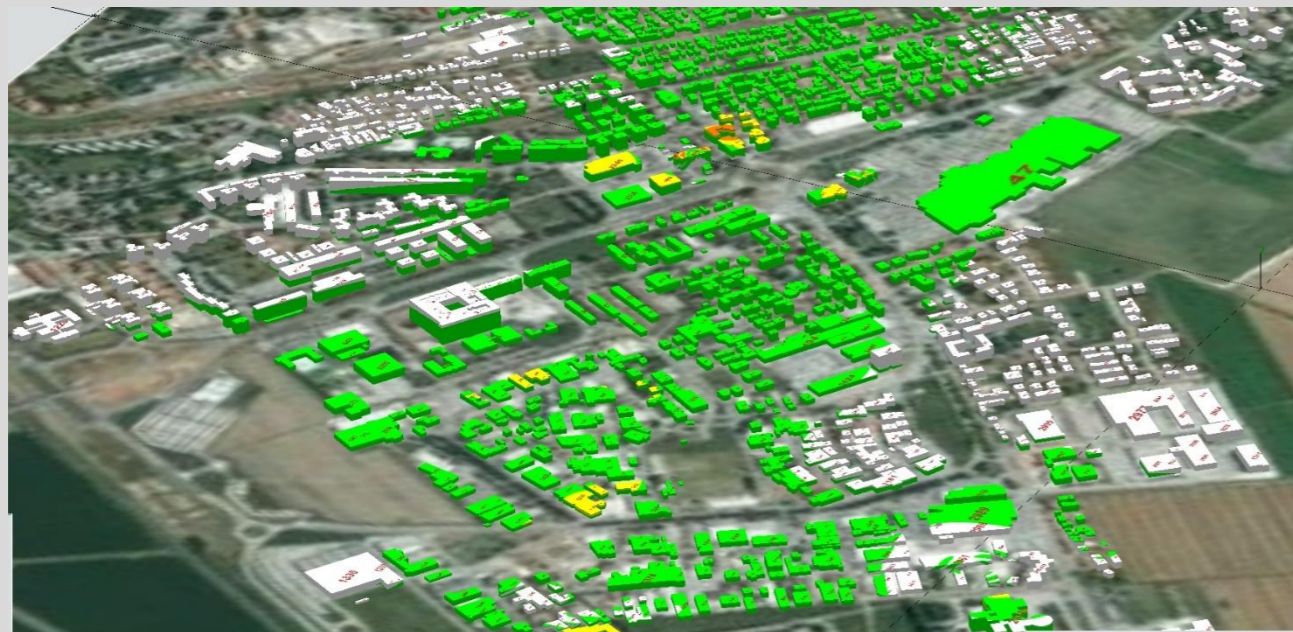
QUADRANTE n. 34b



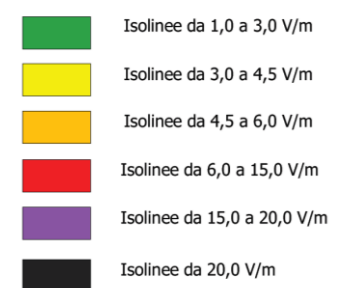
Campo Elettromagnetico

-  Isolinee da 1,0 a 3,0 V/m
-  Isolinee da 3,0 a 4,5 V/m
-  Isolinee da 4,5 a 6,0 V/m
-  Isolinee da 6,0 a 15,0 V/m
-  Isolinee da 15,0 a 20,0 V/m
-  Isolinee da 20,0 V/m

QUADRANTE n. 35a



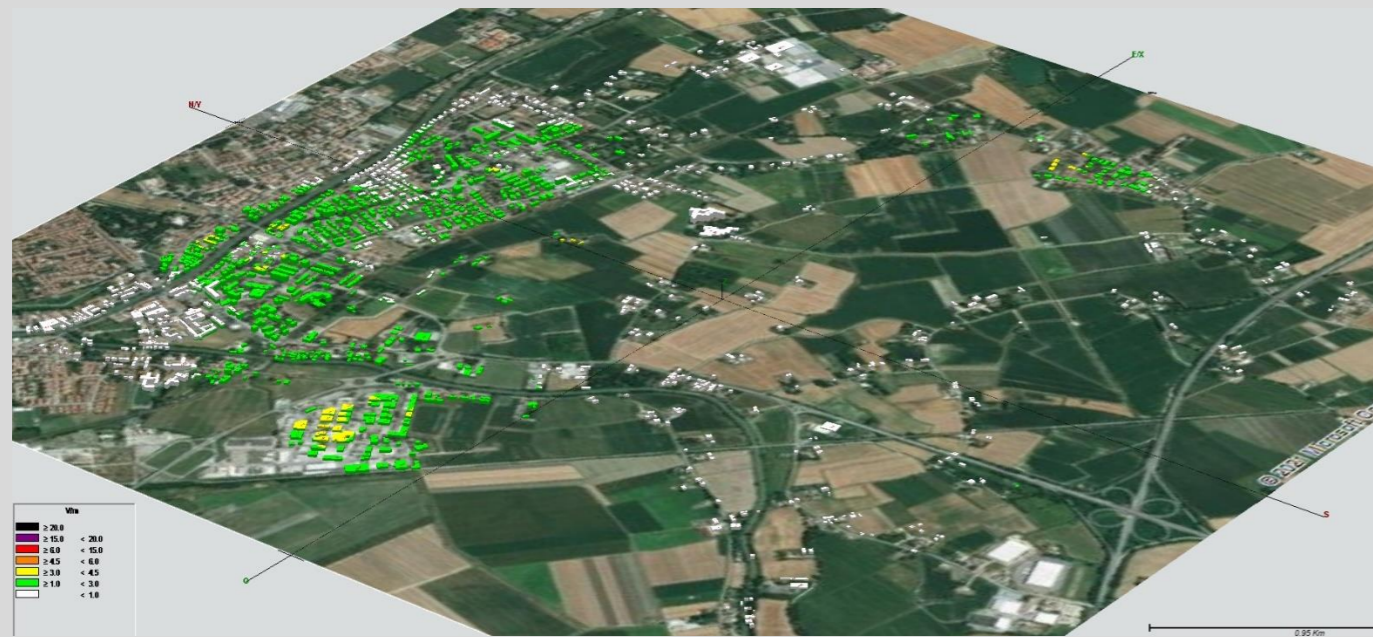
Campo Elettromagnetico









QUADRANTE n. 35b



QUADRANTE n. 36a



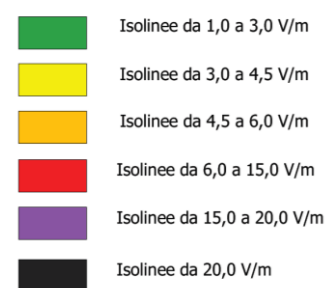
Campo Elettromagnetico

-  Isolinee da 1,0 a 3,0 V/m
-  Isolinee da 3,0 a 4,5 V/m
-  Isolinee da 4,5 a 6,0 V/m
-  Isolinee da 6,0 a 15,0 V/m
-  Isolinee da 15,0 a 20,0 V/m
-  Isolinee da 20,0 V/m

QUADRANTE n. 36b



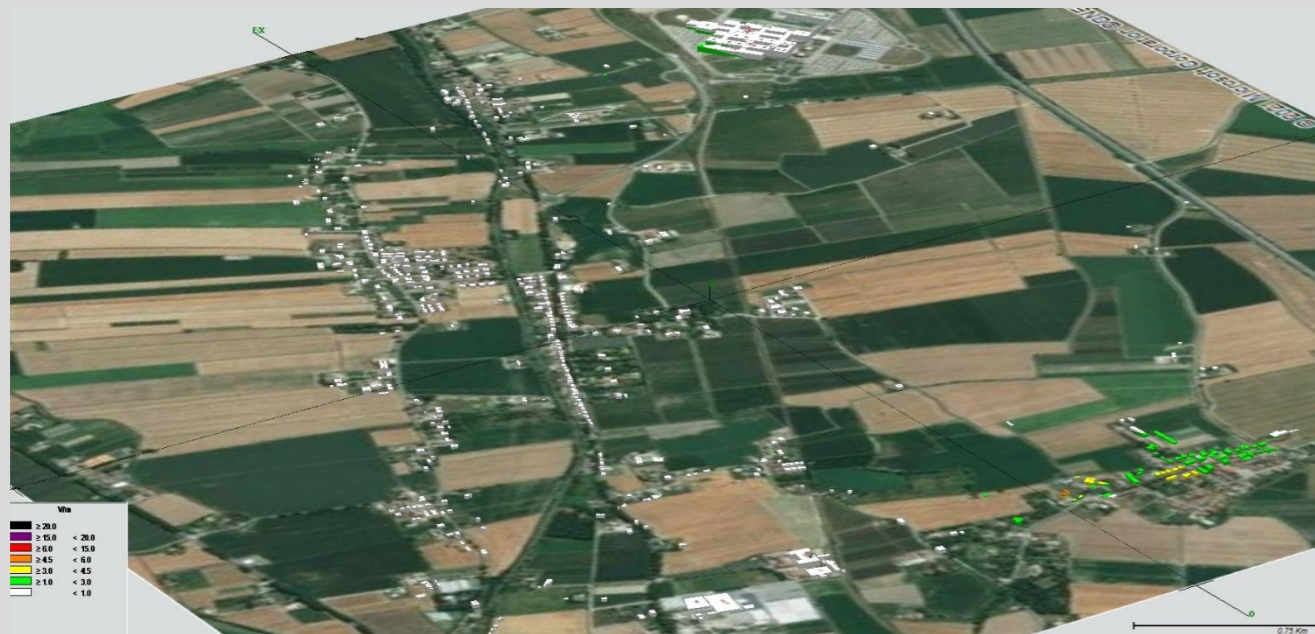
Campo Elettromagnetico



QUADRANTE n. 36c



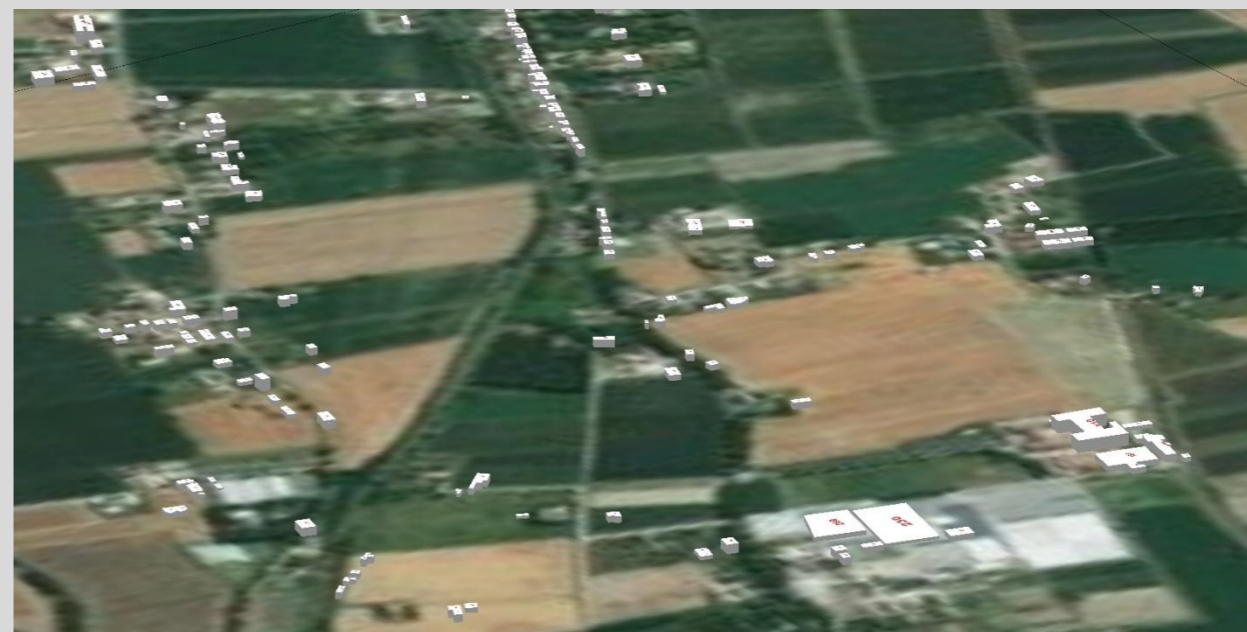
QUADRANTE n. 37a









Campo Elettromagnetico

- Isolinee da 1,0 a 3,0 V/m
- Isolinee da 3,0 a 4,5 V/m
- Isolinee da 4,5 a 6,0 V/m
- Isolinee da 6,0 a 15,0 V/m
- Isolinee da 15,0 a 20,0 V/m
- Isolinee da 20,0 V/m

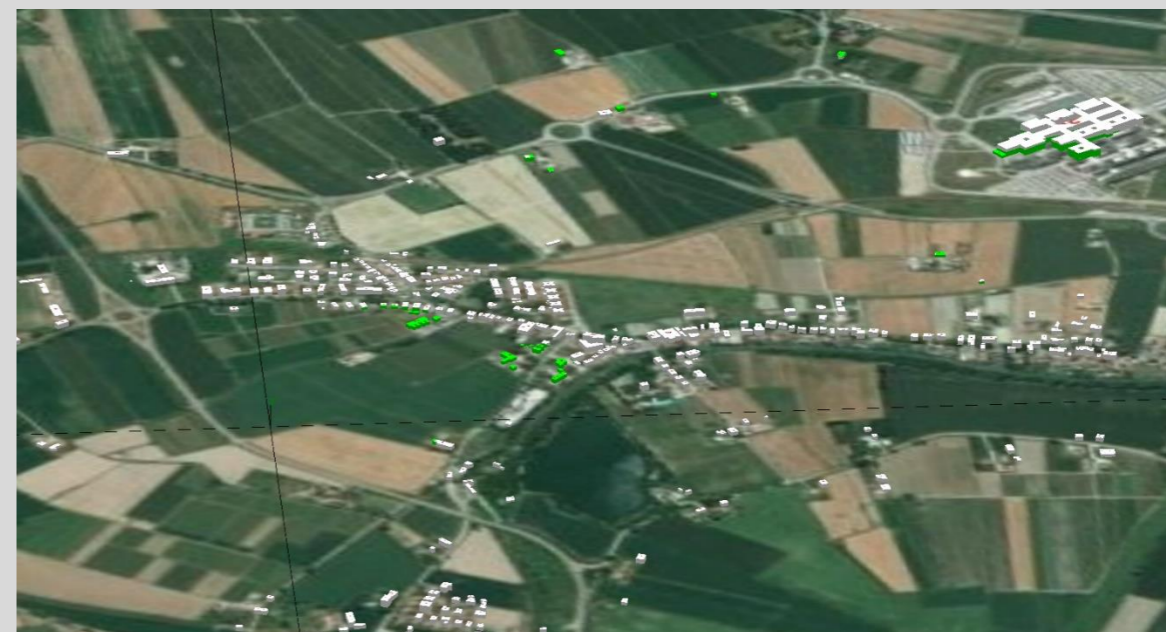
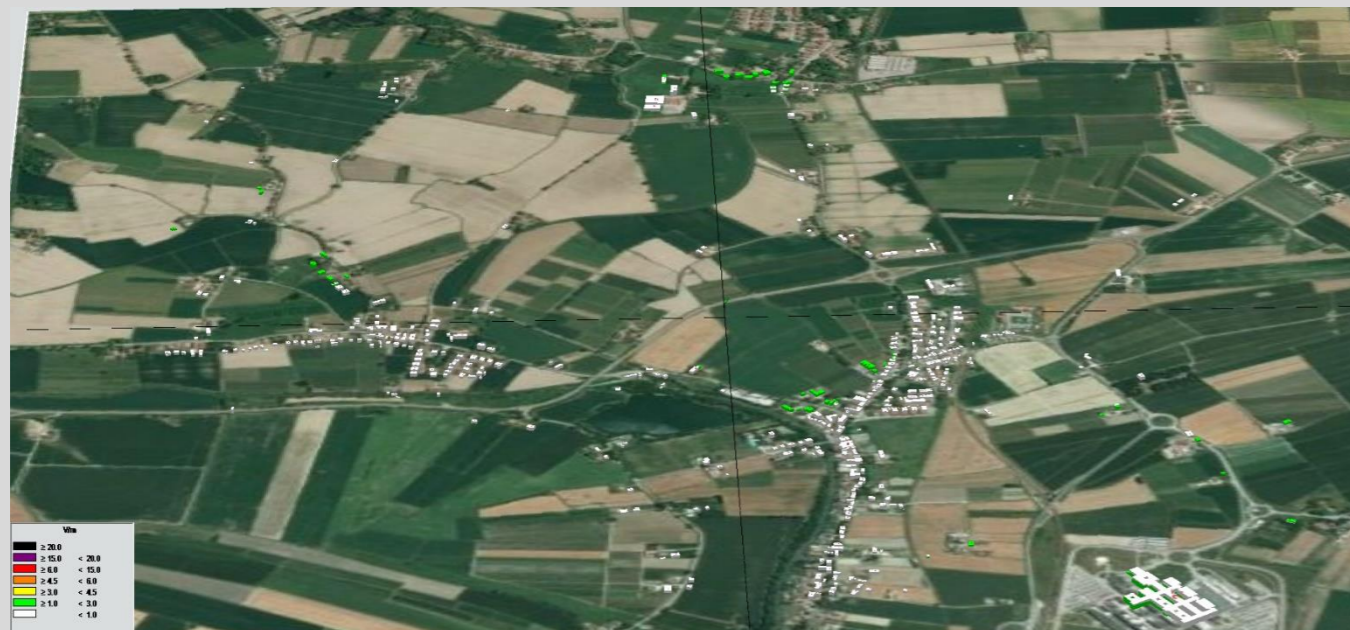
QUADRANTE n. 37b



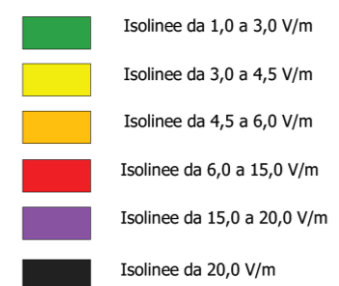
Campo Elettromagnetico

-  Isolinee da 1,0 a 3,0 V/m
-  Isolinee da 3,0 a 4,5 V/m
-  Isolinee da 4,5 a 6,0 V/m
-  Isolinee da 6,0 a 15,0 V/m
-  Isolinee da 15,0 a 20,0 V/m
-  Isolinee da 20,0 V/m

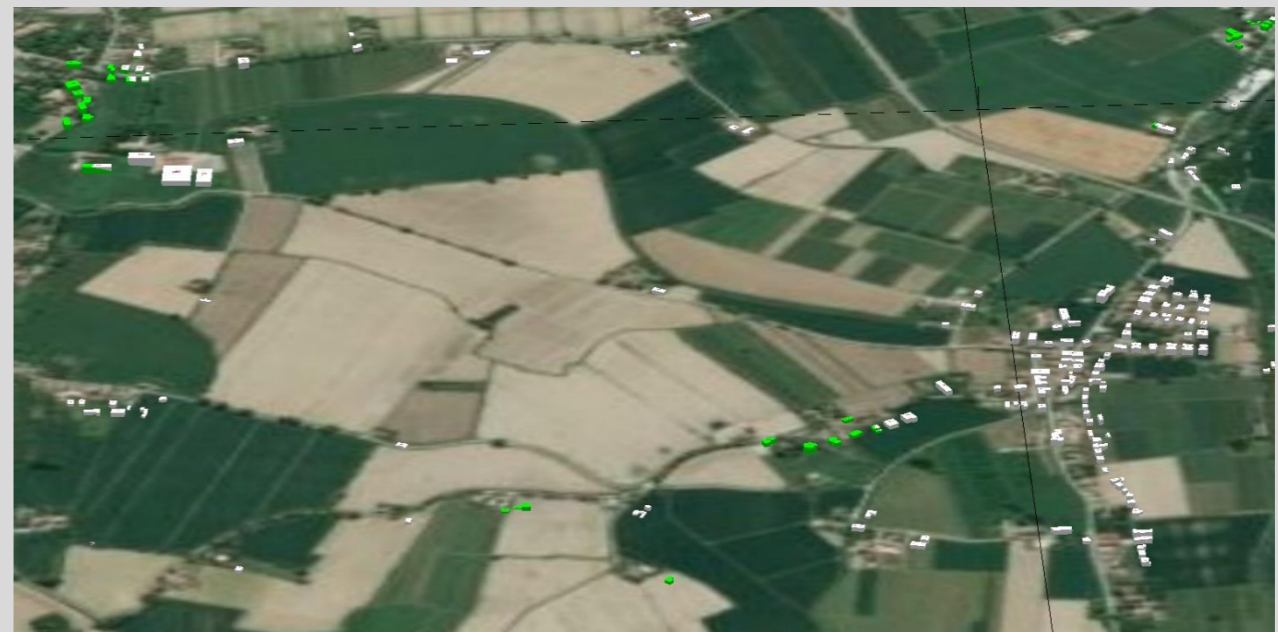
QUADRANTE n. 38a



Campo Elettromagnetico



QUADRANTE n. 38b



QUADRANTE n. 39a









Campo Elettromagnetico

- Isolinee da 1,0 a 3,0 V/m
- Isolinee da 3,0 a 4,5 V/m
- Isolinee da 4,5 a 6,0 V/m
- Isolinee da 6,0 a 15,0 V/m
- Isolinee da 15,0 a 20,0 V/m
- Isolinee da 20,0 V/m

QUADRANTE n. 39b



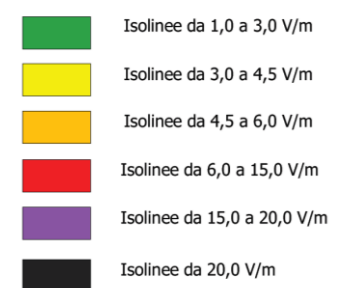
Campo Elettromagnetico

-  Isolinee da 1,0 a 3,0 V/m
-  Isolinee da 3,0 a 4,5 V/m
-  Isolinee da 4,5 a 6,0 V/m
-  Isolinee da 6,0 a 15,0 V/m
-  Isolinee da 15,0 a 20,0 V/m
-  Isolinee da 20,0 V/m

QUADRANTE n. 44a



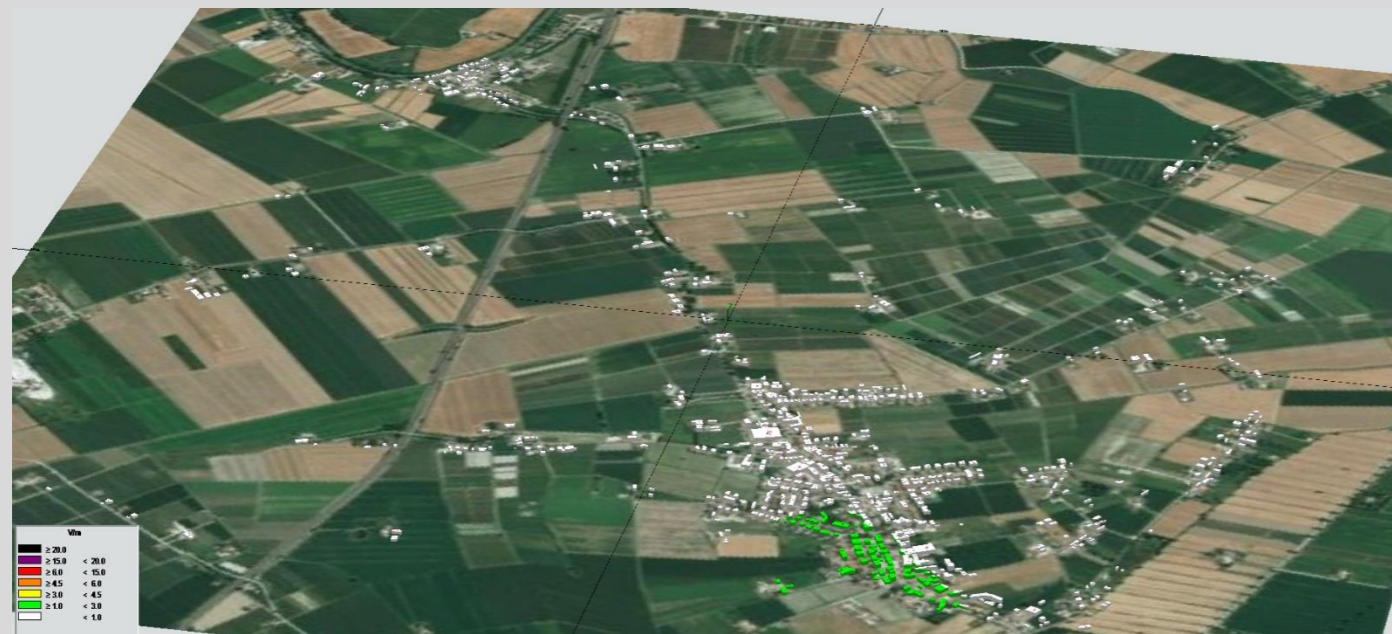
Campo Elettromagnetico









QUADRANTE n. 44b



QUADRANTE n. 45a









Campo Elettromagnetico

-  Isolinee da 1,0 a 3,0 V/m
-  Isolinee da 3,0 a 4,5 V/m
-  Isolinee da 4,5 a 6,0 V/m
-  Isolinee da 6,0 a 15,0 V/m
-  Isolinee da 15,0 a 20,0 V/m
-  Isolinee da 20,0 V/m

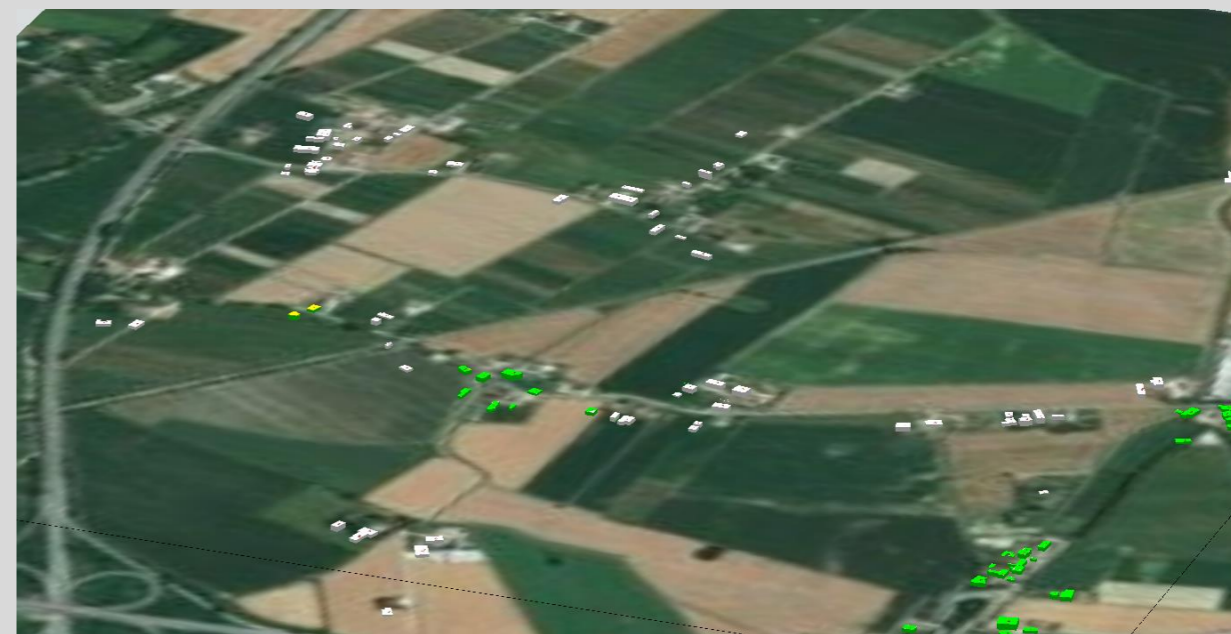
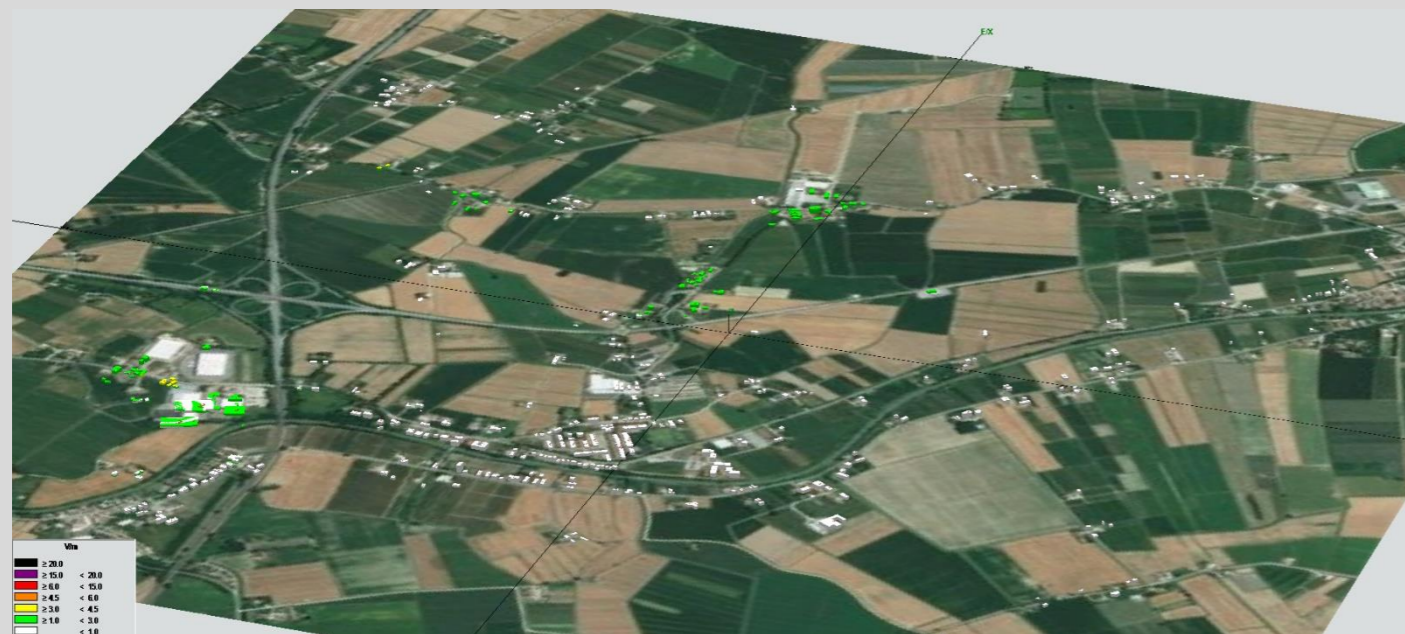
QUADRANTE n. 45b



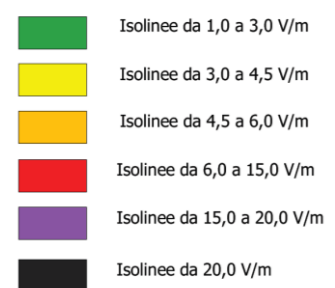
Campo Elettromagnetico

-  Isolinee da 1,0 a 3,0 V/m
-  Isolinee da 3,0 a 4,5 V/m
-  Isolinee da 4,5 a 6,0 V/m
-  Isolinee da 6,0 a 15,0 V/m
-  Isolinee da 15,0 a 20,0 V/m
-  Isolinee da 20,0 V/m

QUADRANTE n. 46a









Campo Elettromagnetico

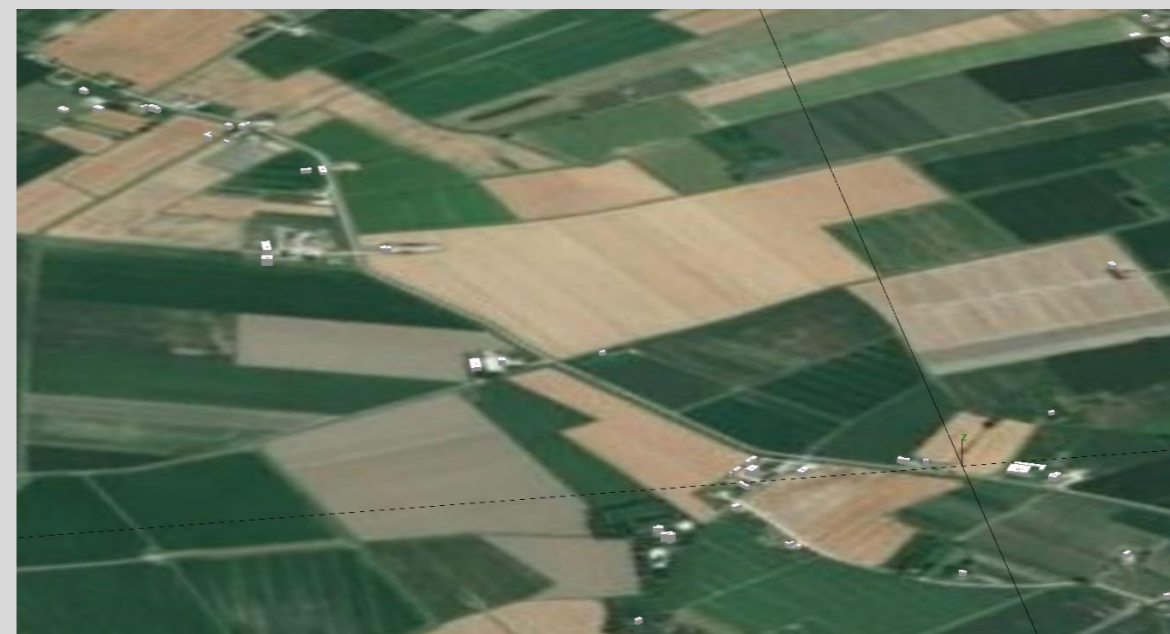
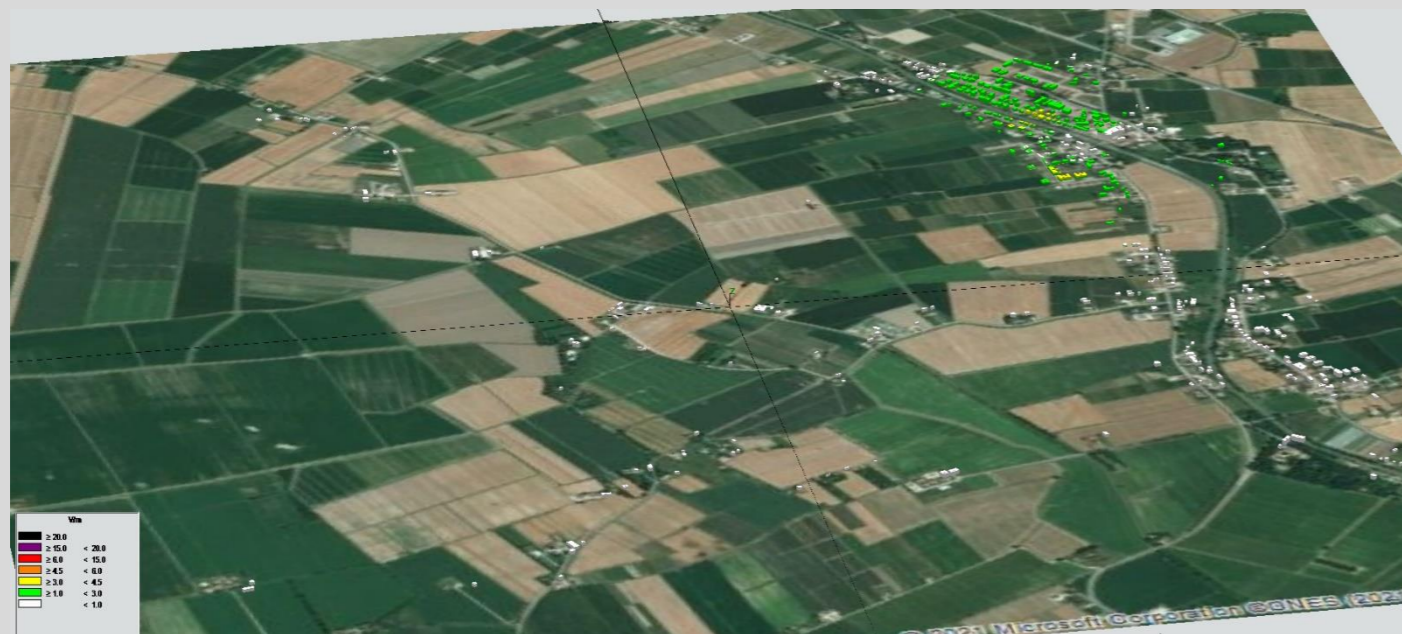


QUADRANTE n. 46b



Campo Elettromagnetico

-  Isolinee da 1,0 a 3,0 V/m
-  Isolinee da 3,0 a 4,5 V/m
-  Isolinee da 4,5 a 6,0 V/m
-  Isolinee da 6,0 a 15,0 V/m
-  Isolinee da 15,0 a 20,0 V/m
-  Isolinee da 20,0 V/m



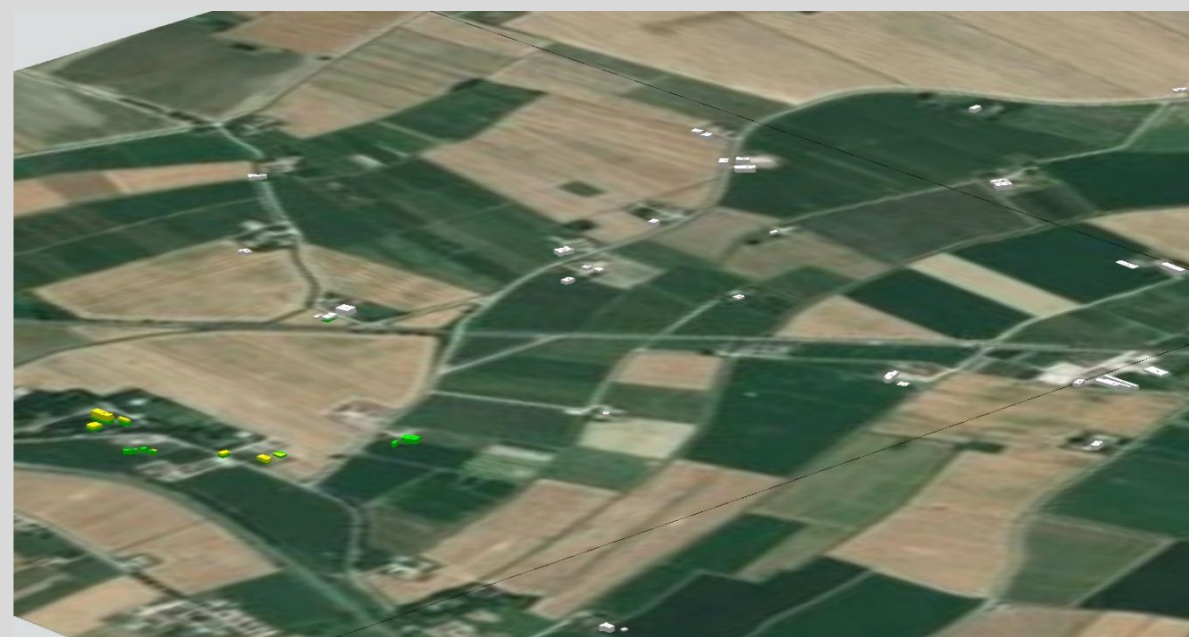
Campo Elettromagnetico

- Isolinee da 1,0 a 3,0 V/m
- Isolinee da 3,0 a 4,5 V/m
- Isolinee da 4,5 a 6,0 V/m
- Isolinee da 6,0 a 15,0 V/m
- Isolinee da 15,0 a 20,0 V/m
- Isolinee da 20,0 V/m

QUADRANTE n. 53b



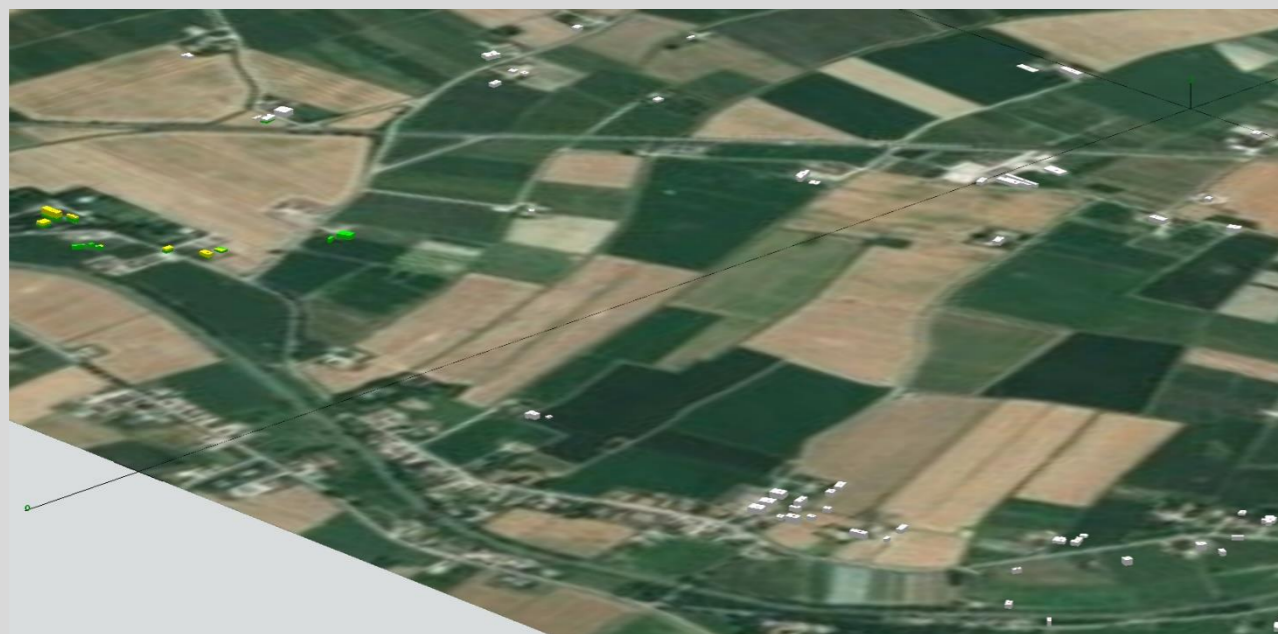
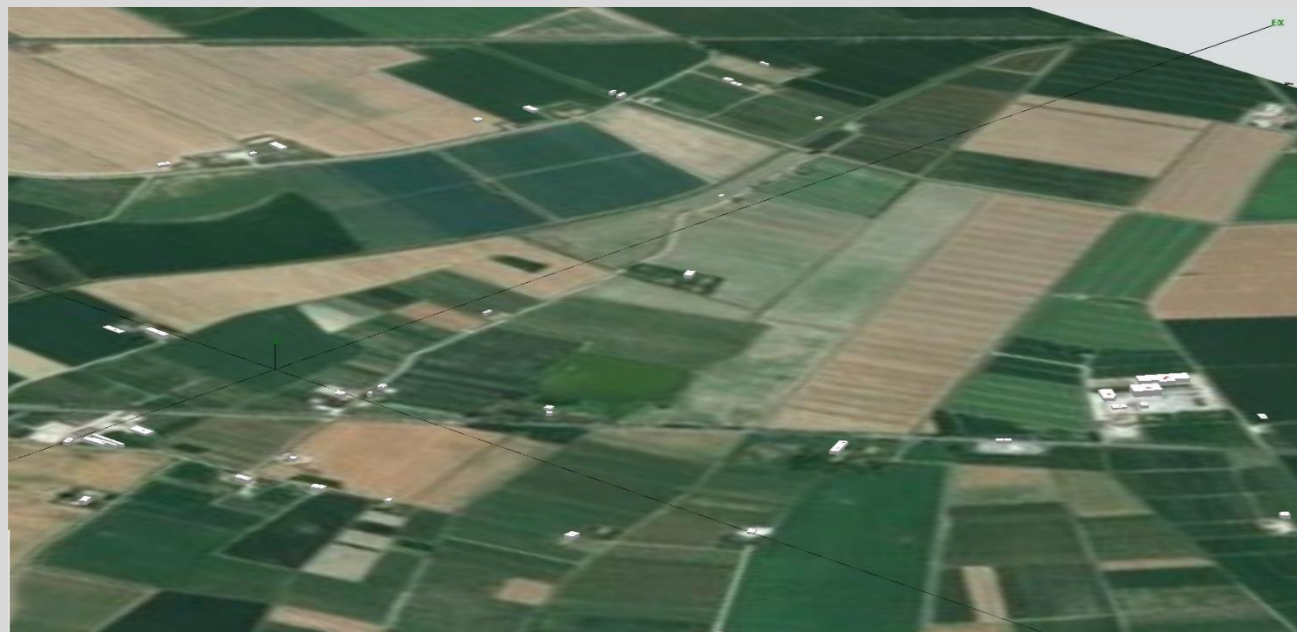
QUADRANTE n. 54a



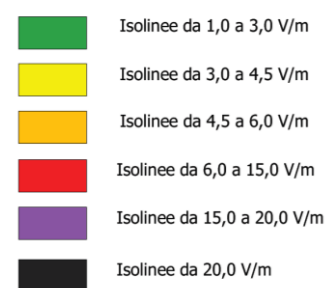
Campo Elettromagnetico

- Isolinee da 1,0 a 3,0 V/m
- Isolinee da 3,0 a 4,5 V/m
- Isolinee da 4,5 a 6,0 V/m
- Isolinee da 6,0 a 15,0 V/m
- Isolinee da 15,0 a 20,0 V/m
- Isolinee da 20,0 V/m

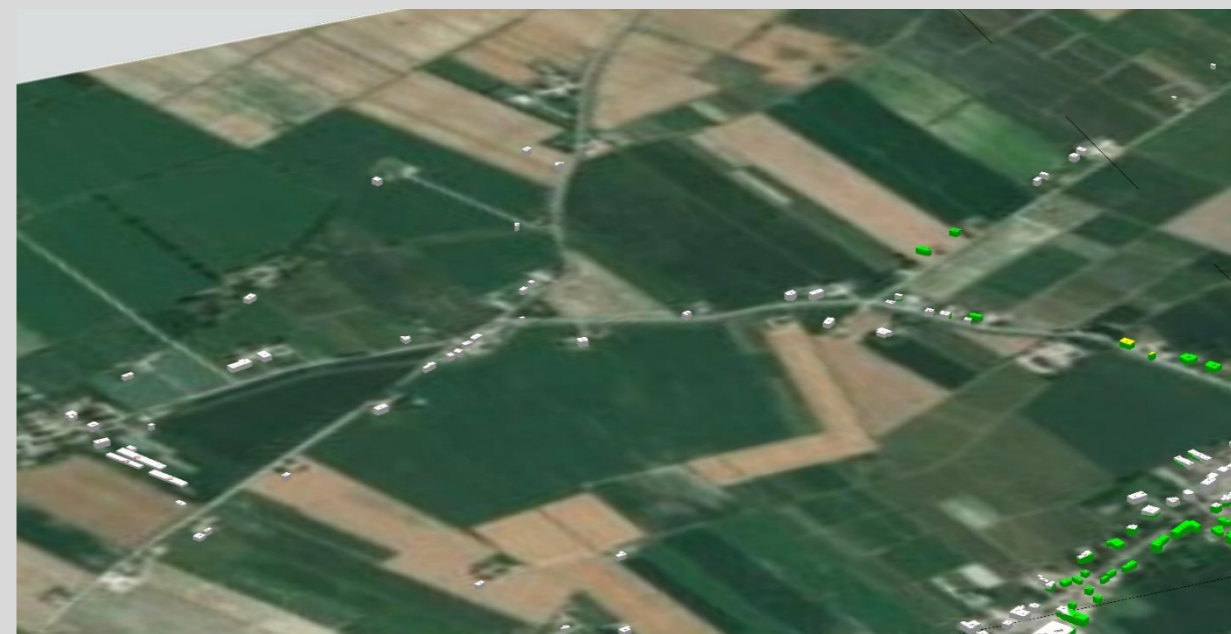
QUADRANTE n. 54b









Campo Elettromagnetico



QUADRANTE n. 58a



Campo Elettromagnetico

-  Isolinee da 1,0 a 3,0 V/m
-  Isolinee da 3,0 a 4,5 V/m
-  Isolinee da 4,5 a 6,0 V/m
-  Isolinee da 6,0 a 15,0 V/m
-  Isolinee da 15,0 a 20,0 V/m
-  Isolinee da 20,0 V/m

QUADRANTE n. 58b



Campo Elettromagnetico

- Isolinee da 1,0 a 3,0 V/m
- Isolinee da 3,0 a 4,5 V/m
- Isolinee da 4,5 a 6,0 V/m
- Isolinee da 6,0 a 15,0 V/m
- Isolinee da 15,0 a 20,0 V/m
- Isolinee da 20,0 V/m

